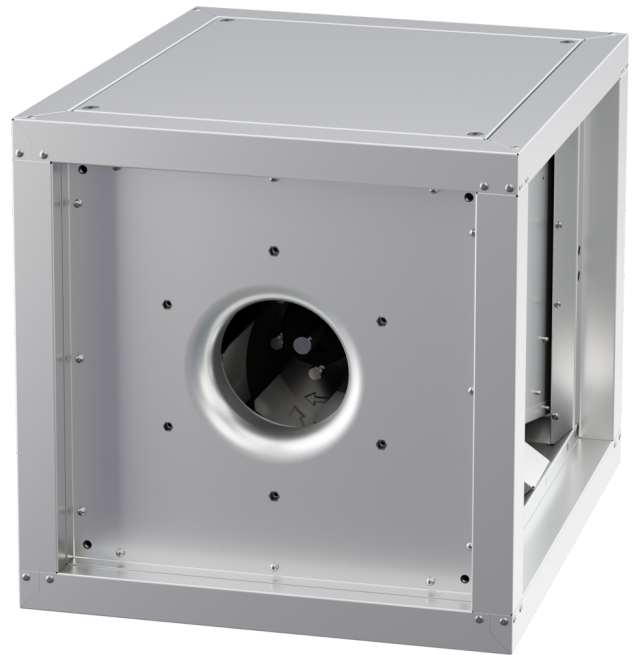


MPC 280 D2 T40

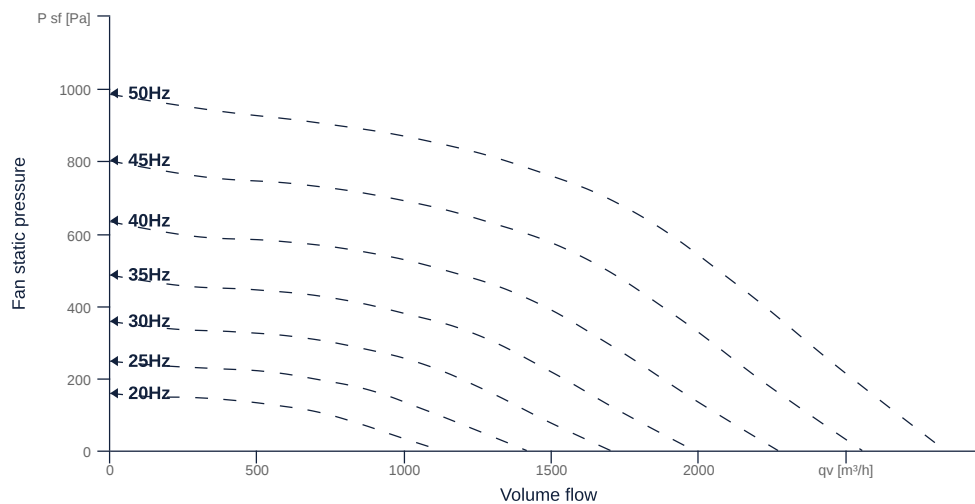
157214

- Backward curved radial impeller
- Removable side walls, variable discharge direction
- Sheet steel housing double-walled, 30 mm mineral wool
- IE3 motor outside the airflow, controllable
- Conveyed medium temperature up to 120 °C in continuous operation
- Housing bottom designed with integrated drain



MAP

Name	Value	Unit
Volume flow	0	m³/h
Pressure	0	Pa



zur Produktseite

MPC 280 D2 T40

157214

ruck

GENERAL DATA

Name	Value	Unit	Formula symbol
ERP conformity	Yes		
Duct size	-		WxHduct
Pipe connection size (DN)	-		DN
Rated voltage (entire device)	400	V	Urated
Phases (entire device)	3~		phase
Electrical protection (entire device)	6 A		fuse
Housing material	Steel		matcasing
Impeller material	Steel		matimpeller
Weight	35.5	kg	m
Nominal air flow rate, nominal point m ³ /h	1645.2	m ³ /h	qVnom
Nominal external pressure, static	710.2	Pa	ps,nom
Fan type	Radial		Fan _{type}
Category / Installation situation	A		cat

ERP DATA (LOT 6)

Name	Value	Unit	Formula symbol
Nominal air flow rate, nominal point m ³ /s	0.46	m ³ /s	qV _{nom}
Actual electrical input power, nominal point	0.68	kW	Pe _{nom}
Face velocity, nominal point	3.4	m/s	V _{nom}
Nominal external pressure, static	710.2	Pa	ps _{nom}
supply air fan static efficiency, nominal point	56.5	%	η _{es,SUP}
Highest external air leakage rate	0.11	%	
Enclosure sound level, nominal point	77	dB(A)	LWA2
Rating	Product is compliant 2018		



zur Produktseite