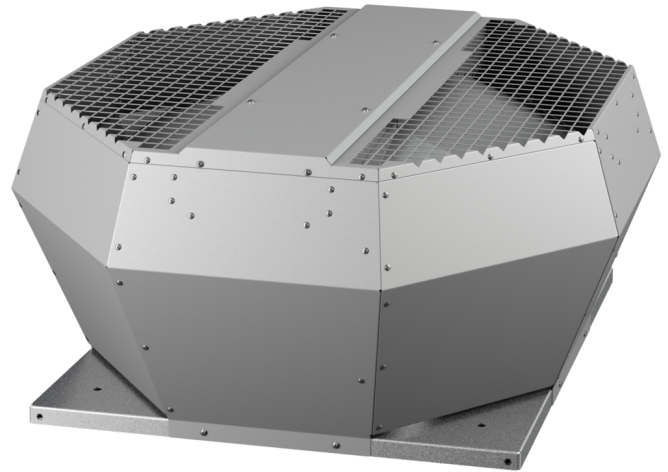


# DVA 630 EC 40

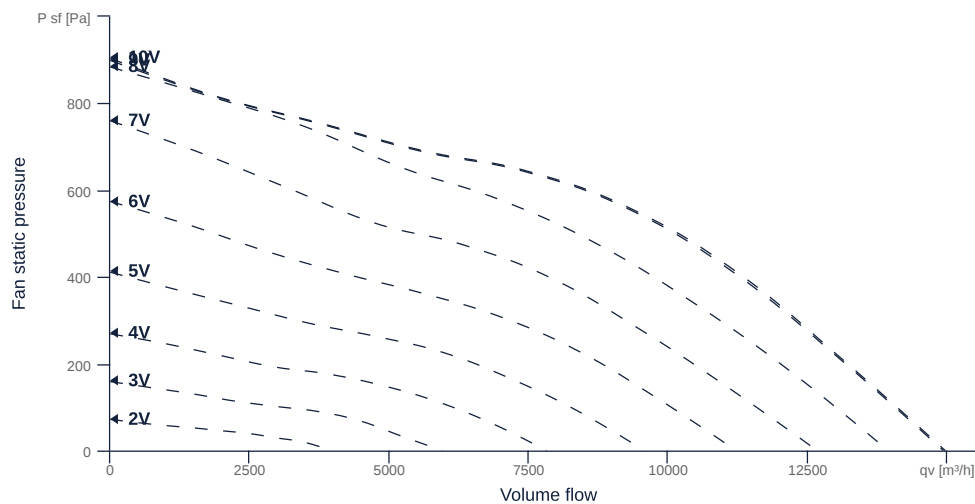
157267

- Backward curved radial impeller
- Vertical discharge
- Housing made of aluminum AlMg3
- High efficiency EC motor, steplessly controllable
- Conveyed medium temperature up to 40 °C in continuous operation
- Internal electronic temperature monitoring



## MAP

Name	Value	Unit
Volume flow	0	m³/h
Pressure	0	Pa



zur Produktseite

# DVA 630 EC 40

157267

**ruck**

## GENERAL DATA

Name	Value	Unit	Formula symbol
ERP conformity	Yes		
Duct size	-		WxHduct
Pipe connection size (DN)	-		DN
Rated voltage (entire device)	400	V	U <sub>rated</sub>
Phases (entire device)	3~		phase
Electrical protection (entire device)	6 A		fuse
Housing material	Aluminium		matcasing
Impeller material	Plastic		matimpeller
Weight	57.5	kg	m
Nominal air flow rate, nominal point m <sup>3</sup> /h	8204.4	m <sup>3</sup> /h	q <sub>v,nom</sub>
Nominal external pressure, static	615.9	Pa	p <sub>s,nom</sub>
Fan type	Radial		Fa <sub>type</sub>
Category / Installation situation	A		cat

## ERP DATA (LOT 6)

Name	Value	Unit	Formula symbol
Nominal air flow rate, nominal point m <sup>3</sup> /s	2.28	m <sup>3</sup> /s	q <sub>v,nom</sub>
Actual electrical input power, nominal point	2.49	kW	P <sub>e,nom</sub>
Face velocity, nominal point	4.4	m/s	v <sub>nom</sub>
Nominal external pressure, static	615.9	Pa	p <sub>s,nom</sub>
supply air fan static efficiency, nominal point	66.5	%	η <sub>es,SUP</sub>
Enclosure sound level, nominal point	87	dB(A)	L <sub>WA2</sub>
Rating	Product is compliant 2018		



zur Produktseite