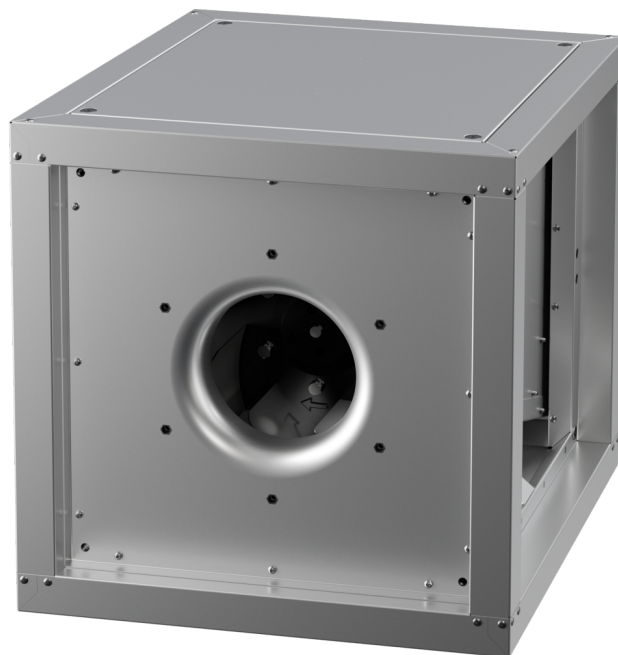


MPC 315 D4 F4 T40

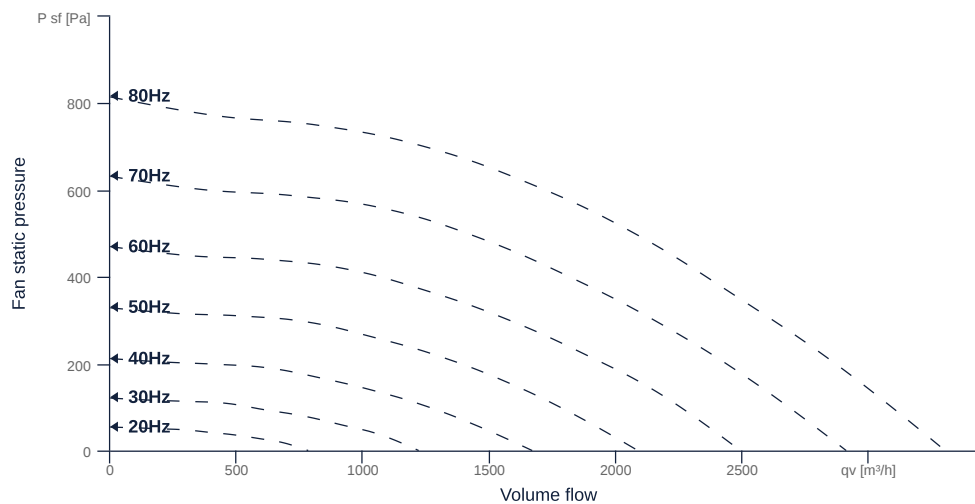
162900

- Backward curved radial impeller
- Variable discharge direction right / left / up
- Galvanized sheet steel housing, double-walled, 25 mm mineral wool
- IE3 motor outside airflow, frequency controllable
- Smoke extract fan F400, 200 °C continuous operation, dual-use
- Housing bottom designed with integrated drain



MAP

Name	Value	Unit
Volume flow	0	m³/h
Pressure	0	Pa



zur Produktseite

MPC 315 D4 F4 T40

162900

ruck

GENERAL DATA

Name	Value	Unit	Formula symbol
ERP conformity	Yes		
Duct size	-		WxHduct
Pipe connection size (DN)	-		DN
Rated voltage (entire device)	400	V	U _{rated}
Phases (entire device)	3~		phase
Electrical protection (entire device)	6 A		fuse
Housing material	Galvanized steel		mat _{casing}
Impeller material	Steel		mat _{impeller}
Weight	40	kg	m
Nominal air flow rate, nominal point m ³ /h	1645.2	m ³ /h	q _{v,nom}
Nominal external pressure, static	499.1	Pa	p _{s,nom}
Fan type	Radial		Fan _{type}
Category / Installation situation	A		cat

ERP DATA (LOT 6)

Name	Value	Unit	Formula symbol
Nominal air flow rate, nominal point m ³ /s	0.46	m ³ /s	q _{v,nom}
Actual electrical input power, nominal point	0.51	kW	P _{e,nom}
Face velocity, nominal point	3.4	m/s	v _{nom}
Nominal external pressure, static	499.1	Pa	p _{s,nom}
supply air fan static efficiency, nominal point	52.7	%	η _{es,SUP}
Highest external air leakage rate	0.09	%	
Enclosure sound level, nominal point	70	dB(A)	L _{WA2}
Rating	Product is compliant 2018		



zur Produktseite