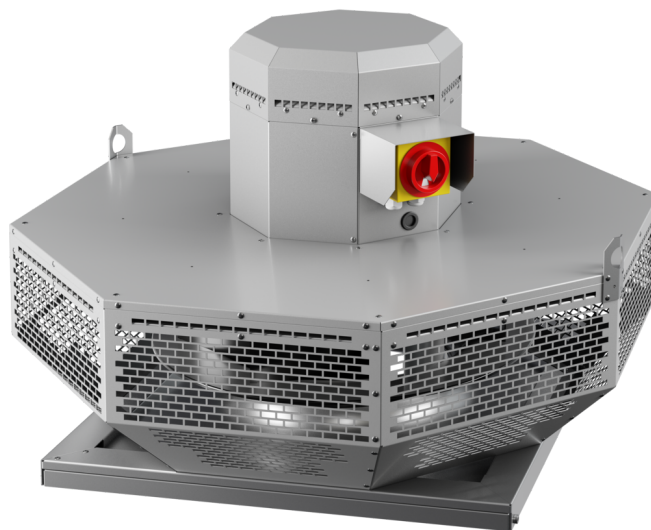


DHL 450 D4 RK 01

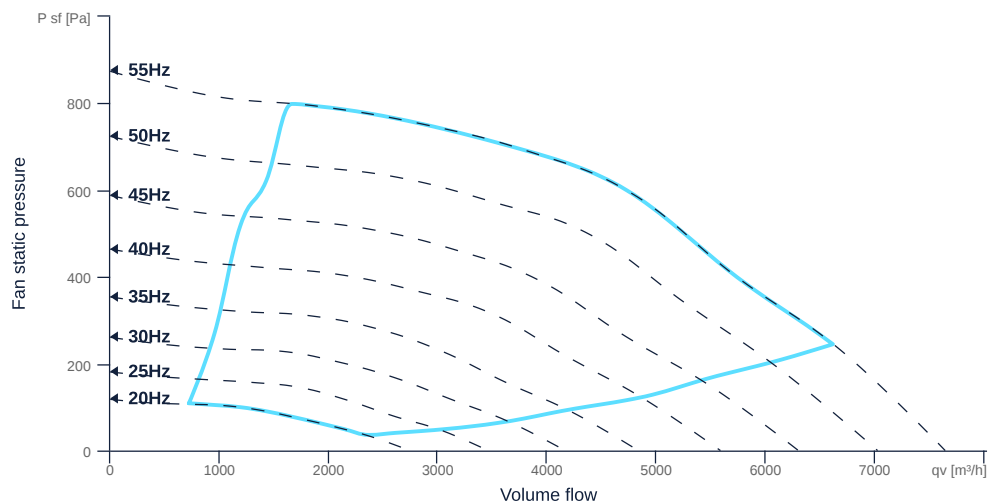
163352

- Backward curved radial impeller
- Horizontal discharge
- Housing made of AlMg3, hinged
- Efficient IE3 motor, frequency controllable
- Conveyor temperature up to 60 °C in continuous operation
- Integrated main switch



MAP

| Name | Value | Unit |
|-------------|-------|------|
| Volume flow | 0 | m³/h |
| Pressure | 0 | Pa |



zur Produktseite

DHL 450 D4 RK 01

163352

ruck

GENERAL DATA

| Name | Value | Unit | Formula symbol |
|--|-----------|-------------------|--------------------|
| ERP conformity | Yes | | |
| Duct size | - | | WxHduct |
| Pipe connection size (DN) | - | | DN |
| Rated voltage (entire device) | 400 | V | U _{rated} |
| Phases (entire device) | 3~ | | phase |
| Electrical protection (entire device) | 6 A | | fuse |
| Housing material | Aluminium | | matcasing |
| Impeller material | Steel | | matimpeller |
| Weight | 49 | kg | m |
| Nominal air flow rate, nominal point m ³ /h | 4633.2 | m ³ /h | q _{v,nom} |
| Nominal external pressure, static | 610.7 | Pa | p _{s,nom} |
| Fan type | Radial | | Fa _{type} |
| Category / Installation situation | A | | cat |

ERP DATA (LOT 6)

| Name | Value | Unit | Formula symbol |
|--|---------------------------|-------------------|---------------------|
| Nominal air flow rate, nominal point m ³ /s | 1.29 | m ³ /s | q _{v,nom} |
| Actual electrical input power, nominal point | 1.2 | kW | P _{e,nom} |
| Face velocity, nominal point | 3.9 | m/s | v _{nom} |
| Nominal external pressure, static | 610.7 | Pa | p _{s,nom} |
| supply air fan static efficiency, nominal point | 63.5 | % | η _{es,SUP} |
| Enclosure sound level, nominal point | 91 | dB(A) | L _{WA2} |
| Rating | Product is compliant 2018 | | |



zur Produktseite