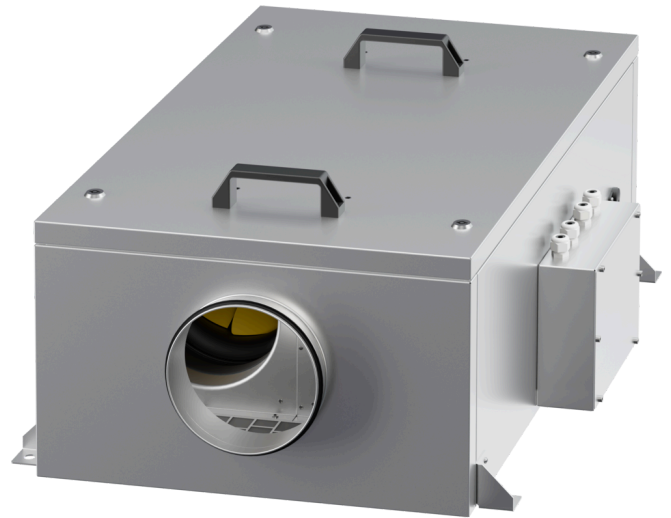


EM DUO 250 EC 01

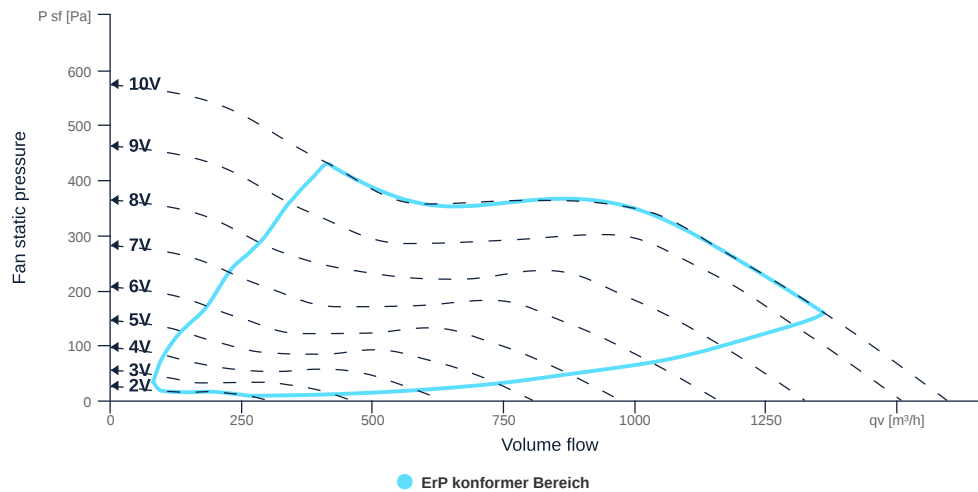
139973

- Efficient diagonal fan, redundant operation
- Optimally tuned and CFD-optimized aerodynamics
- Soundproof housing made of galvanized sheet steel
- High efficiency EC motor, steplessly controllable
- Built-in ETAMASTER with highest efficiency
- Conveyed medium temperature up to 40 °C in continuous operation



FAN CURVES

Name	Value	Unit
Volume flow	0	m³/h
Pressure	0	Pa



to the product detail page

EM DUO 250 EC 01

139973

ruck

GENERAL DATA

Name	Value	Unit	Formula symbol	
Labeling		CE		
Duct size		-	WxHduct	
Pipe connection size (DN)		DN250	DN	
Rated voltage (entire device)		230	V	U _{rated}
Phases (entire device)		1~		phase
Electrical protection (entire device)		6 A		fuse
Housing material		Galvanized steel		matcasing
Impeller material		Plastic		matimpeller
Weight		45	kg	m
Nominal air flow rate, nominal point m ³ /h		986.4	m ³ /h	q _{v,nom}
Nominal external pressure, static		297.2	Pa	p _{s,nom}
Fan type		Diagonal		Fan _{type}
Category / Installation situation		A		cat

ERP DATA (LOT 6)

Name	Value	Unit	Formula symbol	
Nominal air flow rate, nominal point m ³ /s		0.27	m ³ /s	q _{v,nom}
Actual electrical input power, nominal point		0.16	kW	P _{e,nom}
Face velocity, nominal point		5.6	m/s	V _{nom}
Nominal external pressure, static		297.2	Pa	p _{s,nom}
supply air fan static efficiency, nominal point		49.3	%	η _{es,SUP}
Highest external air leakage rate		0.4	%	
Enclosure sound level, nominal point		61	dba	L _{WA2}
Rating		Product is compliant 2018		



to the product detail page

EM DUO 250 EC 01

139973

ruck

MAXIMAL DATA

Name	Value		Unit	Formula symbol
	50 Hz	60 Hz		
Max. power consumption (device)	189	189	W	P _{ed, max}
Max. operating current (device)	1.6	1.6	A	I _{ed, max}
Max. speed	3390	3390	1/min	n _{max}
Max. stat. efficiency	48.6	48.6	%	η _{es}
Max. fan efficiency	51.2	51.2	%	η _e
Max. flowrate	1595	1595	m ³ /h	q _{v, max}
Max. stat pressure	570	570	Pa	p _{sf, max}
Max. medium temperature	40	40	°C	T _{m, max}
Max. environment temperature	40	40	°C	T _{amb, max}
Min. environment temperature	-30	-30	°C	T _{amb, min}

MOTOR DATA

Name	Value		Unit	Formula symbol
	50 Hz	60 Hz		
Rated frequency (device)		50		f
Motor type		EC		phase
Control type		stepless-controlled		ctrltype
Installation type		ORM (Out)		install
Rotation direction		right		rotation
Isolation class		ISO F		ISOclass
Motor-protection		TEC		protectmotor
Protection class		IP30		IP _{motor}
Is pole-changeable		No		polexch
Type of power supply		AC 1~		p _{wsup} _{motor}
Rated voltage	230	230	V	U _{rated, f1}
Rated current	1.39	1.39	A	I _{rated, f1}
Shaft power	193	193	W	P _{out, f1}
Speed	3255	3255	1/min	n _{f1}
Min. temperature	-30	-30	°C	T _{motor, min}
UL-Certification motor		None		ULcert



to the product detail page