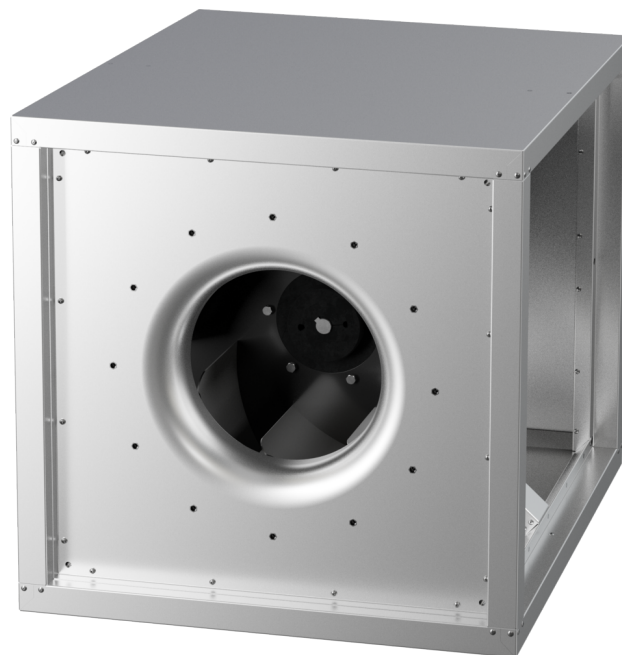


# MPC 450 D4 40

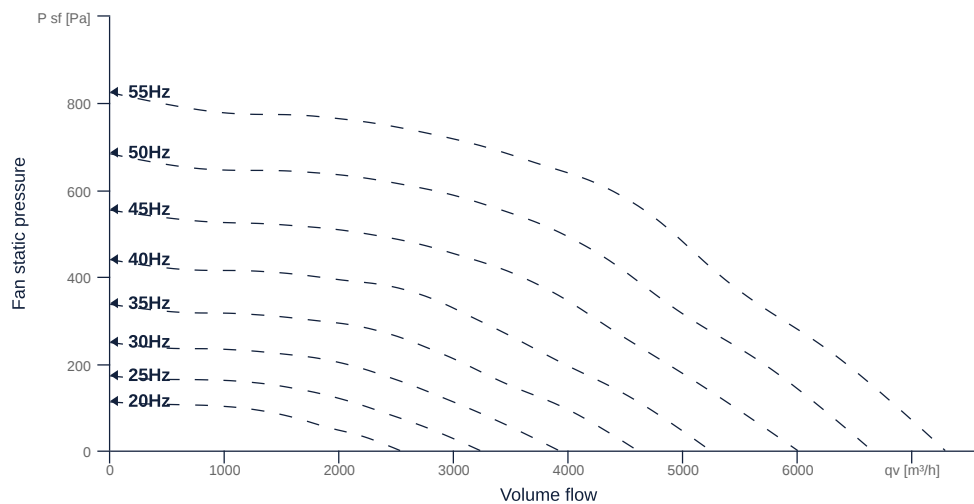
157199

- Radial fan with backward curved impeller
- Variable discharge direction right / left / linear
- Double wall housing made of galvanized steel sheet, insulated
- Efficient IE3 motor, frequency controllable
- Motor protection via frequency converter or motor protection switch
- With bottom tray



## MAP

Name	Value	Unit
Volume flow	0	m³/h
Pressure	0	Pa



zur Produktseite

# MPC 450 D4 40

157199

**ruck**

## GENERAL DATA

Name	Value	Unit	Formula symbol
ERP conformity	Yes		
Duct size	-		WxH <sub>duct</sub>
Pipe connection size (DN)	-		DN
Rated voltage (entire device)	400	V	U <sub>rated</sub>
Phases (entire device)	3~		phase
Electrical protection (entire device)	6 A		fuse
Housing material	Steel		mat <sub>casing</sub>
Impeller material	Steel		mat <sub>impeller</sub>
Weight	73.6	kg	m
Nominal air flow rate, nominal point m <sup>3</sup> /h	4399.2	m <sup>3</sup> /h	q <sub>v,nom</sub>
Nominal external pressure, static	593	Pa	p <sub>s,nom</sub>
Fan type	Radial		Fan <sub>type</sub>
Category / Installation situation	A		cat

## ERP DATA (LOT 6)

Name	Value	Unit	Formula symbol
Nominal air flow rate, nominal point m <sup>3</sup> /s	1.22	m <sup>3</sup> /s	q <sub>v,nom</sub>
Actual electrical input power, nominal point	1.22	kW	P <sub>e,nom</sub>
Face velocity, nominal point	3.8	m/s	v <sub>nom</sub>
Nominal external pressure, static	593	Pa	p <sub>s,nom</sub>
supply air fan static efficiency, nominal point	63.4	%	η <sub>es,SUP</sub>
Highest external air leakage rate	0.13	%	
Enclosure sound level, nominal point	66	dB(A)	L <sub>WA2</sub>
Rating	Product is compliant 2018		



zur Produktseite