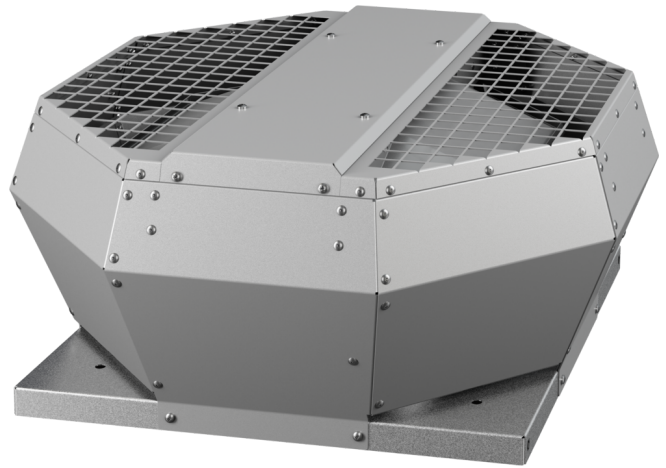


# DVA 280 EC 30

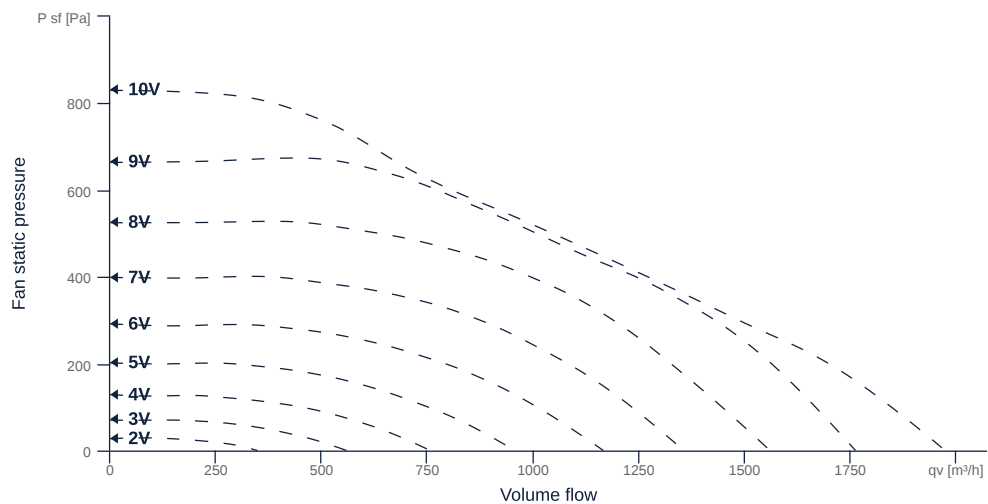
131297

- Backward curved radial impeller
- Vertical discharge
- Housing made of aluminum AlMg3
- High efficiency EC motor, steplessly controllable
- Conveyed medium temperature up to 55 °C in continuous operation
- Internal electronic temperature monitoring



## MAP

| Name        | Value | Unit |
|-------------|-------|------|
| Volume flow | 0     | m³/h |
| Pressure    | 0     | Pa   |



zur Produktseite

# DVA 280 EC 30

131297

**ruck**

## GENERAL DATA

| Name   | Value            | Unit              | Formula symbol          |
|--|------------------|-------------------|-------------------------|
| ERP conformity   | Yes              |                   |                         |
| Duct size  | -                |                   | WxHduct                 |
| Pipe connection size (DN)                              | -                |                   | DN                      |
| Rated voltage (entire device)                          | 230              | V                 | U <sub>rated</sub>      |
| Phases (entire device)                                 | 1~               |                   | phase                   |
| Electrical protection (entire device)                  | 6 A              |                   | fuse                    |
| Housing material                                       | Aluminium        |                   | mat <sub>casing</sub>   |
| Impeller material                                      | Galvanized steel |                   | mat <sub>impeller</sub> |
| IP-Protection class (terminal box)                     | IP44             |                   | IP <sub>ebox</sub>      |
| Weight   | 8                | kg                | m                       |
| Nominal air flow rate, nominal point m <sup>3</sup> /h | 889.2            | m <sup>3</sup> /h | q <sub>v,nom</sub>      |
| Nominal external pressure, static                      | 343.2            | Pa                | p <sub>s,nom</sub>      |
| Fan type   | Radial           |                   | Fan <sub>type</sub>     |
| Category / Installation situation                      | A                |                   | cat                     |

## ERP DATA (LOT 6)

| Name   | Value                     | Unit              | Formula symbol      |
|--|---------------------------|-------------------|---------------------|
| Nominal air flow rate, nominal point m <sup>3</sup> /s | 0.25                      | m <sup>3</sup> /s | q <sub>v,nom</sub>  |
| Actual electrical input power, nominal point           | 0.16                      | kW                | P <sub>e,nom</sub>  |
| Face velocity, nominal point                           | 2.8                       | m/s               | v <sub>nom</sub>    |
| Nominal external pressure, static                      | 343.2                     | Pa                | p <sub>s,nom</sub>  |
| supply air fan static efficiency, nominal point        | 58.8                      | %                 | η <sub>es,SUP</sub> |
| Enclosure sound level, nominal point                   | 86                        | dB(A)             | L <sub>WA2</sub>    |
| Rating   | Product is compliant 2018 |                   |                     |

zur Produktseite

