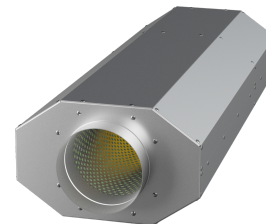


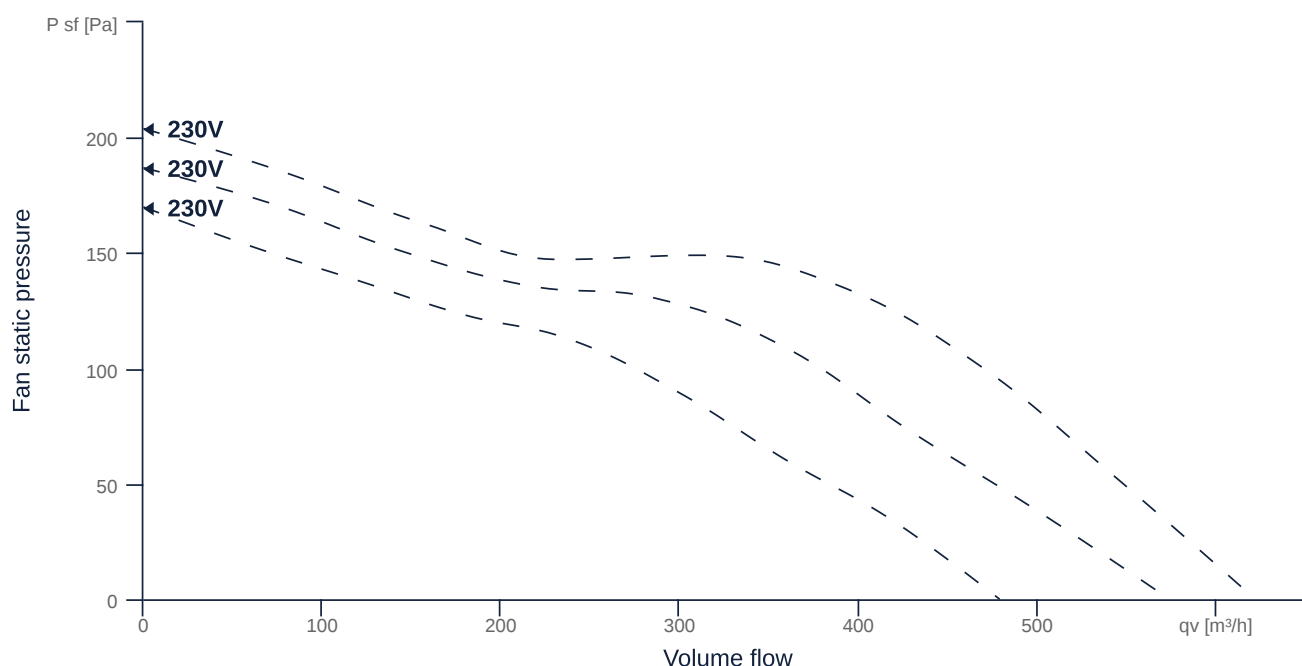
# EMI 150 E2M O 01

158059

- High-efficiency, insulated diagonal fan
- Optimum sound attenuation due to silencer
- Very compact housing made of galvanized sheet steel
- Robust AC motor, 3-steps controllable
- Highest aerodynamic efficiency
- Conveyed medium temperature up to 60 °C in continuous operation



## MAP



## GENERAL DATA

Name	Value	Unit	Formula symbol
ERP conformity	Yes		
Duct size	-		WxHduct
Pipe connection size (DN)	DN150		DN
Electrical protection (entire device)	6 A		fuse
Housing material	Galvanized steel		matcasing
Impeller material	Plastic		matimpeller
Weight	10.2	kg	m
Fan type	Diagonal		Fan <sub>type</sub>
Category / Installation situation	B		cat
Sound insulation	Yes		snd <sub>ins</sub>
Rated voltage (entire device)	230	V	U <sub>rated</sub>
Phases (entire device)	1~		phase



zur Produktseite

# EMI 150 E2M O 01

158059

## MOTOR DATA

Name	Value		Unit	Formula symbol
	50 Hz	60 Hz		
Rated frequency (device)	50.000000			f
Motor type	AC 1~			phase
Control type	step-controlled			ctrltype
Installation	IRM (In)			install
Rotation direction	right			rotation
Isolation class	ISO F			ISOclass
Motor-protection	TAI			protectmotor
Protection class	IP00			IPmotor
Is pole-changeable	No			polexch
Type of power supply	AC 1~			pwrsupmotor
Capacity condenser	1.5		µF	Ccond
Voltage condenser	450		V	VUcond
Number of poles (1)	2.000000			num polesw1
Rated voltage	230		V	U <sub>rated, f1</sub>
Rated current	0.22		A	I <sub>rated, f1</sub>
Shaft power	25		W	P <sub>out, f1</sub>
Cos Phi	0.000000	0.000000		cos φ
UL-Certification motor	None			ULcert

## PRODUCT INFORMATION

Name	Value	Unit	Formula symbol
Category / Installation situation	B		cat
Fan type	Diagonal		Fan <sub>type</sub>

## ERP DATA (LOT11)

Name	Value	Unit	Formula symbol
Speed at the energy efficiency optimum	2748	1/min	n <sub>opt</sub>
Efficiency level	42.6	%	N
Efficiency category	total		catefficiency
Input power of the motor at the energy efficiency optimum	0.05	kW	P <sub>e, opt</sub>
Overall efficiency	67.3	%	η <sub>ges</sub>
Measurement category	B		meas cat
Fan pressure at optimum energy efficiency point	148	Pa	p <sub>f, opt</sub>
Flowrate at energy efficiency optimum	388	m³/h	q <sub>v, opt</sub>



zur Produktseite