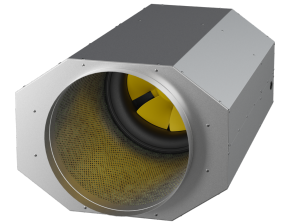


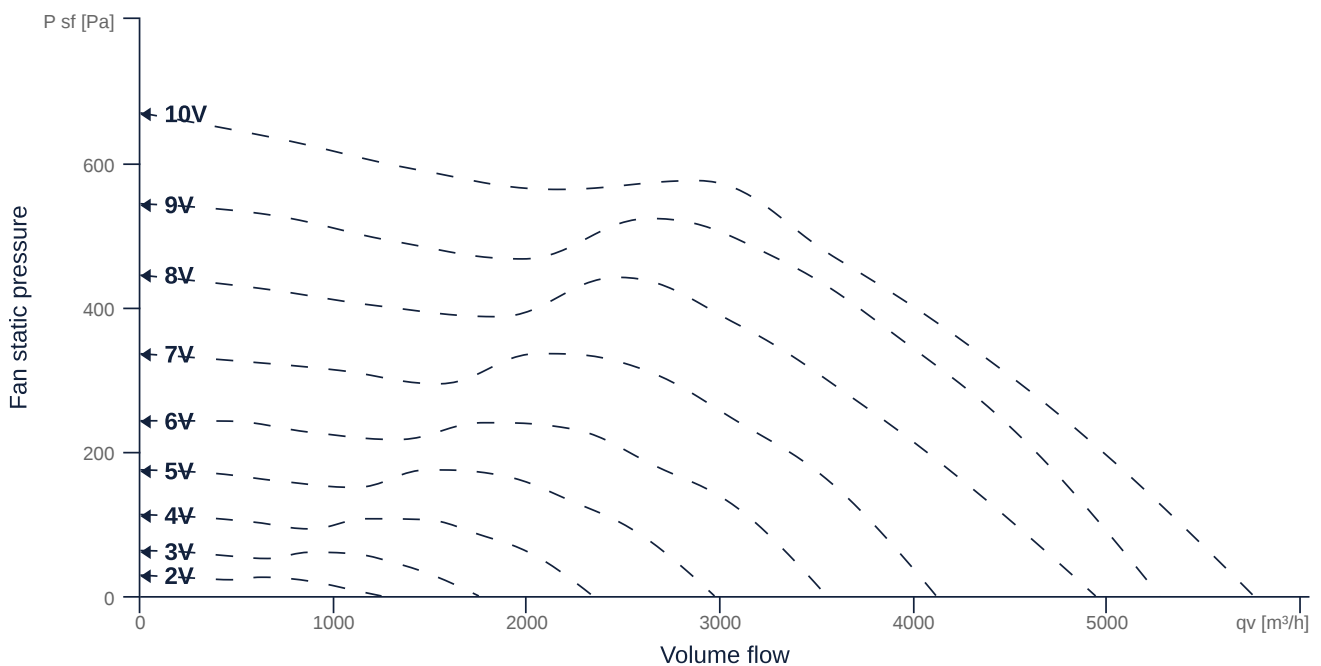
EMI 400 EC O 01

158007

- High-efficiency, insulated diagonal fan
- Optimum sound attenuation due to silencer
- Very compact housing made of galvanized sheet steel
- High efficiency EC motor, steplessly controllable
- Highest aerodynamic efficiency
- Conveyed medium temperature up to 60 °C in continuous operation



MAP



GENERAL DATA

Name	Value	Unit	Formula symbol
ERP conformity	Yes		
Duct size	-		WxHduct
Pipe connection size (DN)	DN400		DN
Electrical protection (entire device)	6 A		fuse
Housing material	Galvanized steel		matcasing
Impeller material	Plastic		matimpeller
Weight	28.4	kg	m
Fan type	Diagonal		Fan _{type}
Category / Installation situation	B		cat
Sound insulation	Yes		snd _{ins}
Rated voltage (entire device)	230	V	U _{rated}
Phases (entire device)	1~		phase



zur Produktseite

MOTOR DATA

Name	Value		Unit	Formula symbol
	50 Hz	60 Hz		
Rated frequency (device)	50.000000			f
Motor type	EC			phase
Control type	stepless-controlled			ctrltype
Installation	ORM (Out)			install
Rotation direction	right			rotation
Isolation class	ISO F			ISOclass
Motor-protection	TEC			protectmotor
Protection class	IP20			IPmotor
Is pole-changeable	No			polexch
Type of power supply	AC 1~			pwrsupmotor
Rated voltage	230	230	V	U _{rated, f1}
Rated current	3.3	3.3	A	I _{rated, f1}
Shaft power	600	600	W	P _{out, f1}
Speed	2300	2300	1/min	n _{f1}
Min. temperature	-25	-25	°C	T _{motor, min}
Cos Phi	0.000000	0.000000		cos φ
UL-Certification motor	UL recognized			ULcert

PRODUCT INFORMATION

Name	Value	Unit	Formula symbol
Category / Installation situation	B		cat
Fan type	Diagonal		Fan _{type}

ERP DATA (LOT11)

Name	Value	Unit	Formula symbol
Speed at the energy efficiency optimum	2293	1/min	n _{opt}
Efficiency level	71.5	%	N
Efficiency category	total		catefficiency
Input power of the motor at the energy efficiency optimum	0.73	kW	P _{e, opt}
Overall efficiency	83.4	%	η _{ges}
Measurement category	B		meas cat
Fan pressure at optimum energy efficiency point	516	Pa	p _{f, opt}
Flowrate at energy efficiency optimum	3408	m³/h	q _{v, opt}



zur Produktseite