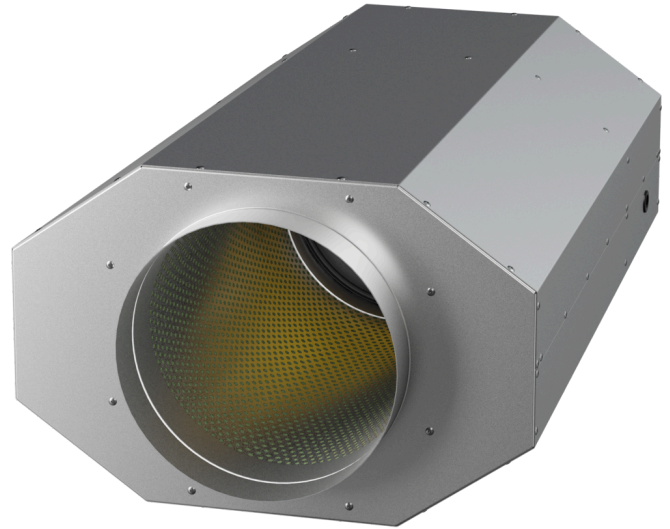


# EMI 355 EC O 01

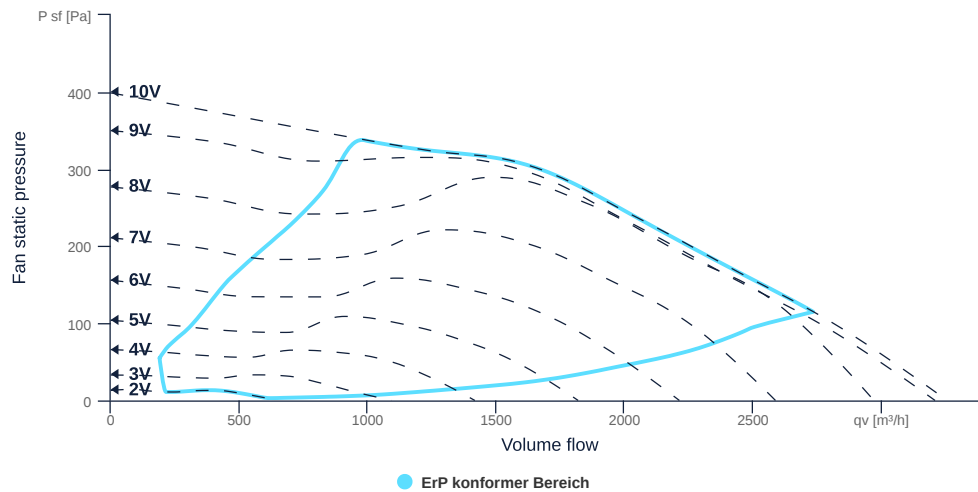
158373

- High-efficiency, insulated diagonal fan
- Optimum sound attenuation due to silencer
- Very compact housing made of galvanized sheet steel
- High efficiency EC motor, steplessly controllable
- Highest aerodynamic efficiency
- Conveyed medium temperature up to 35 °C in continuous operation



## FAN CURVES

Name	Value	Unit
Volume flow	0	m³/h
Pressure	0	Pa



to the product detail page

## GENERAL DATA

Name	Value	Unit	Formula symbol
Labeling	CE, UKCA		
Duct size	-		WxH <sub>duct</sub>
Pipe connection size (DN)	DN355		DN
Rated voltage (entire device)	230	V	U <sub>rated</sub>
Phases (entire device)	1~		phase
Electrical protection (entire device)	6 A		fuse
Housing material	Galvanized steel		mat <sub>casing</sub>
Impeller material	Plastic		mat <sub>impeller</sub>
Weight	21.4	kg	m
Fan type	Diagonal		F <sub>an</sub> type
Category / Installation situation	B		cat

## MAXIMAL DATA

Name	Value		Unit	Formula symbol
	50 Hz	60 Hz		
Max. power consumption (device)	270	270	W	P <sub>ed, max</sub>
Max. operating current (device)	1.91	1.91	A	I <sub>ed, max</sub>
Max. speed	2250	2250	1/min	n <sub>max</sub>
Max. stat. efficiency	51.4	51.4	%	η <sub>es</sub>
Max. fan efficiency	54.6	54.6	%	η <sub>e</sub>
Max. flowrate	3255	3255	m <sup>3</sup> /h	Q <sub>v, max</sub>
Max. stat pressure	400	400	Pa	p <sub>sf, max</sub>
Max. medium temperature	35	35	°C	T <sub>m, max</sub>
Max. environment temperature	35	35	°C	T <sub>amb, max</sub>
Min. environment temperature	-30	-30	°C	T <sub>amb, min</sub>



to the product detail page

## MOTOR DATA

Name	Value		Unit	Formula symbol
	50 Hz	60 Hz		
Rated frequency (device)		50		f
Motor type		EC		phase
Control type		stepless-controlled		ctrltype
Installation type		ORM (Out)		install
Rotation direction		right		rotation
Isolation class		ISO F		ISOclass
Motor-protection		TEC		protectmotor
Protection class		IP30		IPmotor
Is pole-changeable		No		polexch
Type of power supply		AC 1~		pwrsupmotor
Rated voltage	230	230	V	U <sub>rated, f1</sub>
Rated current	1.61	1.61	A	I <sub>rated, f1</sub>
Shaft power	253	253	W	P <sub>out, f1</sub>
Speed	1946	1946	1/min	n <sub>f1</sub>
Min. temperature	-30	-30	°C	T <sub>motor, min</sub>
UL-Certification motor		None		ULcert

## ERP DATA (LOT11)

Name	Value	Unit	Formula symbol
Speed at the energy efficiency optimum	1851	1/min	n <sub>opt</sub>
Efficiency level	64.8	%	N
Efficiency category	total		catefficiency
Input power of the motor at the energy efficiency optimum	0.25	kW	P <sub>e, opt</sub>
Overall efficiency	81.7	%	η <sub>ges</sub>
Measurement category	B		meas cat
Fan pressure at energy efficiency optimum	271	Pa	p <sub>f, opt</sub>
Flowrate at energy efficiency optimum	1923	m <sup>3</sup> /h	q <sub>v, opt</sub>



to the product detail page