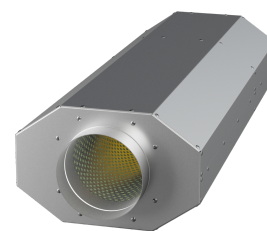


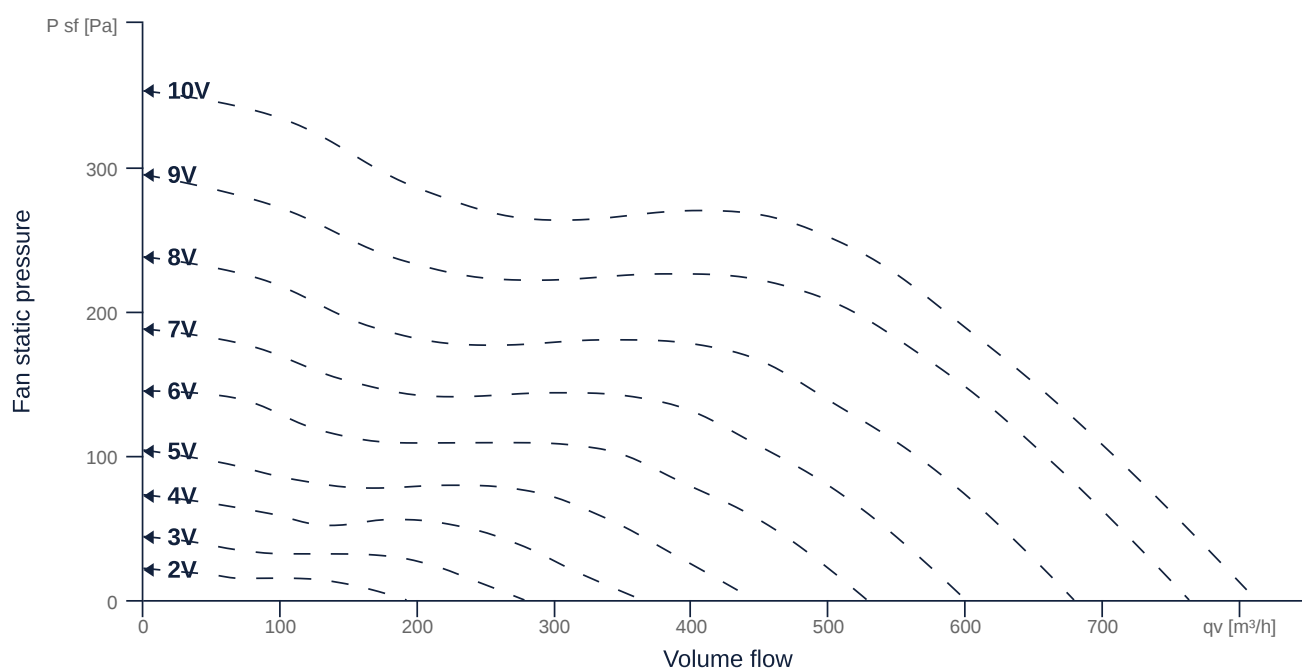
# EMI 150 EC O 01

158064

- High-efficiency, insulated diagonal fan
- Optimum sound attenuation due to silencer
- Very compact housing made of galvanized sheet steel
- High efficiency EC motor, steplessly controllable
- Highest aerodynamic efficiency
- Conveyed medium temperature up to 45 °C in continuous operation



## MAP



## GENERAL DATA

Name	Value	Unit	Formula symbol
ERP conformity	Yes		
Duct size	-		WxH <sub>duct</sub>
Pipe connection size (DN)	DN150		DN
Electrical protection (entire device)	6 A		fuse
Housing material	Galvanized steel		mat <sub>casing</sub>
Impeller material	Plastic		mat <sub>impeller</sub>
Weight	10.3	kg	m
Fan type	Diagonal		Fan <sub>type</sub>
Category / Installation situation	B		cat
Sound insulation	Yes		snd <sub>ins</sub>
Rated voltage (entire device)	230	V	U <sub>rated</sub>
Phases (entire device)	1~		phase



zur Produktseite

## MOTOR DATA

Name	Value		Unit	Formula symbol
	50 Hz	60 Hz		
Rated frequency (device)	50.000000			f
Motor type	EC			phase
Control type	stepless-controlled			ctrltype
Installation	ORM (Out)			install
Rotation direction	right			rotation
Isolation class	ISO F			ISOclass
Motor-protection	TEC			protectmotor
Protection class	IP54			IPmotor
Is pole-changeable	No			polexch
Type of power supply	AC 1~			pwrsupmotor
Rated voltage	230		V	U <sub>rated, f1</sub>
Rated current	0.56		A	I <sub>rated, f1</sub>
Shaft power	70		W	P <sub>out, f1</sub>
Speed	3655		1/min	n <sub>f1</sub>
Min. temperature	-30		°C	T <sub>motor, min</sub>
Cos Phi	0.000000	0.000000		cos φ
UL-Certification motor	None			ULcert

## PRODUCT INFORMATION

Name	Value	Unit	Formula symbol
Category / Installation situation	B		cat
Fan type	Diagonal		Fan <sub>type</sub>

## ERP DATA (LOT11)

Name	Value	Unit	Formula symbol
Speed at the energy efficiency optimum	3662	1/min	n <sub>opt</sub>
Efficiency level	60.9	%	N
Efficiency category	total		catefficiency
Input power of the motor at the energy efficiency optimum	0.06	kW	P <sub>e, opt</sub>
Overall efficiency	84	%	η <sub>ges</sub>
Measurement category	B		meas cat
Fan pressure at optimum energy efficiency point	248	Pa	p <sub>f, opt</sub>
Flowrate at energy efficiency optimum	478	m³/h	q <sub>v, opt</sub>



zur Produktseite