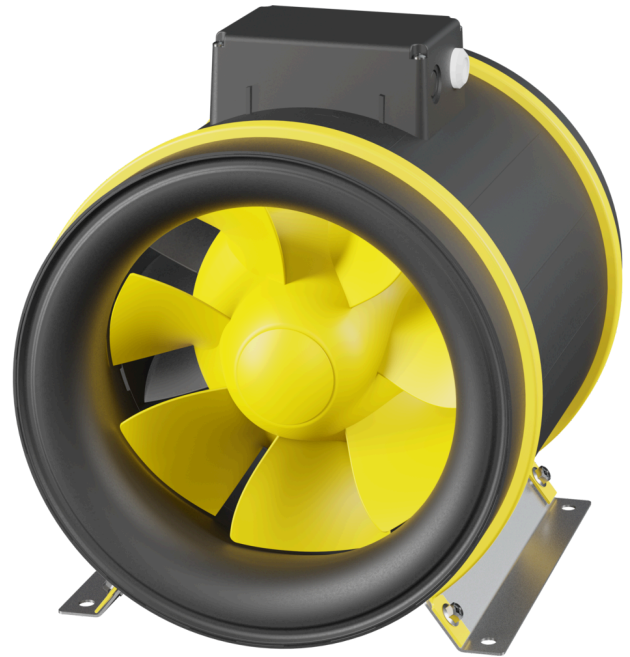


EM 280 E2M 01

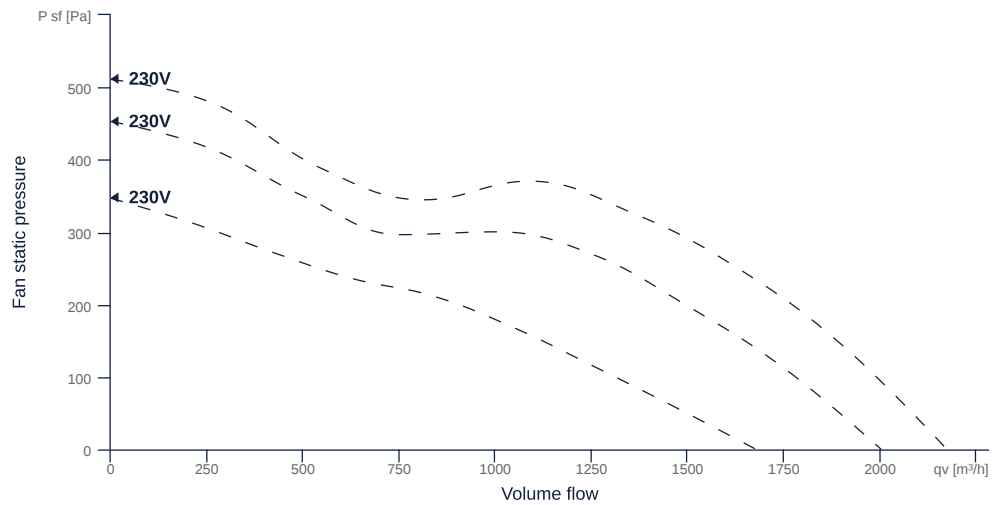
130471

- Innovative, high-efficiency diagonal fan
- Optimally tuned, CFD-optimized aerodynamics
- Housing made of impact-resistant, reinforced polypropylene
- Robust AC motor, 3-steps controllable
- Conveyed medium temperature up to 60 °C in continuous operation
- The benchmark for efficiency since 2012



FAN CURVES

Name	Value	Unit
Volume flow	0	m³/h
Pressure	0	Pa



to the product detail page

EM 280 E2M 01

130471

ruck

GENERAL DATA

Name	Value	Unit	Formula symbol
Labeling	CE, UKCA		
Duct size	-		WxHduct
Pipe connection size (DN)	DN280		DN
Rated voltage (entire device)	230	V	U _{rated}
Phases (entire device)	1~		phase
Electrical protection (entire device)	6 A		fuse
Housing material	Plastic		mat _{casing}
Impeller material	Plastic		mat _{impeller}
IP-protection class (entire device)	IPX4		IP _{compl}
IP-Protection class (terminal box)	IP44		IP _{ebox}
Weight	8.56	kg	m
Fan type	Diagonal		Fan _{type}
Category / Installation situation	A		cat

MAXIMAL DATA

Name	Value	Unit	Formula symbol
Max. power consumption (device)	239	W	P _{ed, max}
Max. operating current (device)	1.12	A	I _{ed, max}
Max. speed	2830	1/min	n _{max}
Max. stat. efficiency	49.7	%	η _{es}
Max. fan efficiency	52.9	%	η _e
Max. flowrate	2170	m ³ /h	Q _{v, max}
Max. stat pressure	510	Pa	p _{sf, max}
Max. medium temperature	60	°C	T _{m, max}
Max. environment temperature	60	°C	T _{amb, max}
Min. environment temperature	-25	°C	T _{amb, min}
Min. voltage	230	V	U _{min}



to the product detail page

MOTOR DATA

Name	Value		Unit	Formula symbol
	50 Hz	60 Hz		
Rated frequency (device)		50		f
Motor type		AC 1~		phase
Installation type		IRM (In)		install
Rotation direction		right		rotation
Isolation class		ISO F		ISOclass
Motor-protection		TAI		protectmotor
Protection class		IP00		IPmotor
Is pole-changeable		No		polexch
Type of power supply		AC 1~		pwrsupmotor
Capacity capacitor		10	μF	Ccond
Voltage capacitor		450	V	VUcond
Number of poles (1)		2.000000		num polesw1
Rated voltage	230		V	U _{rated, f1}
Rated current	1.2		A	I _{rated, f1}
Shaft power	180		W	P _{out, f1}
UL-Certification motor		None		ULcert

ERP DATA (LOT11)

Name	Value	Unit	Formula symbol
Speed at the energy efficiency optimum	2777	1/min	n _{opt}
Efficiency level	51.3	%	N
Efficiency category	statisch		catefficiency
Input power of the motor at the energy efficiency optimum	0.22	kW	P _{e, opt}
Overall efficiency	68.7	%	η _{ges}
Measurement category	A		meas cat
Fan pressure at energy efficiency optimum	362	Pa	p _{f, opt}
Flowrate at energy efficiency optimum	1213	m³/h	Q _{v, opt}



to the product detail page