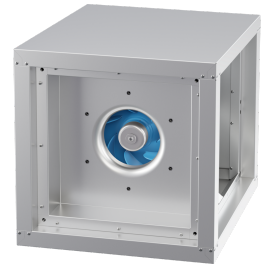


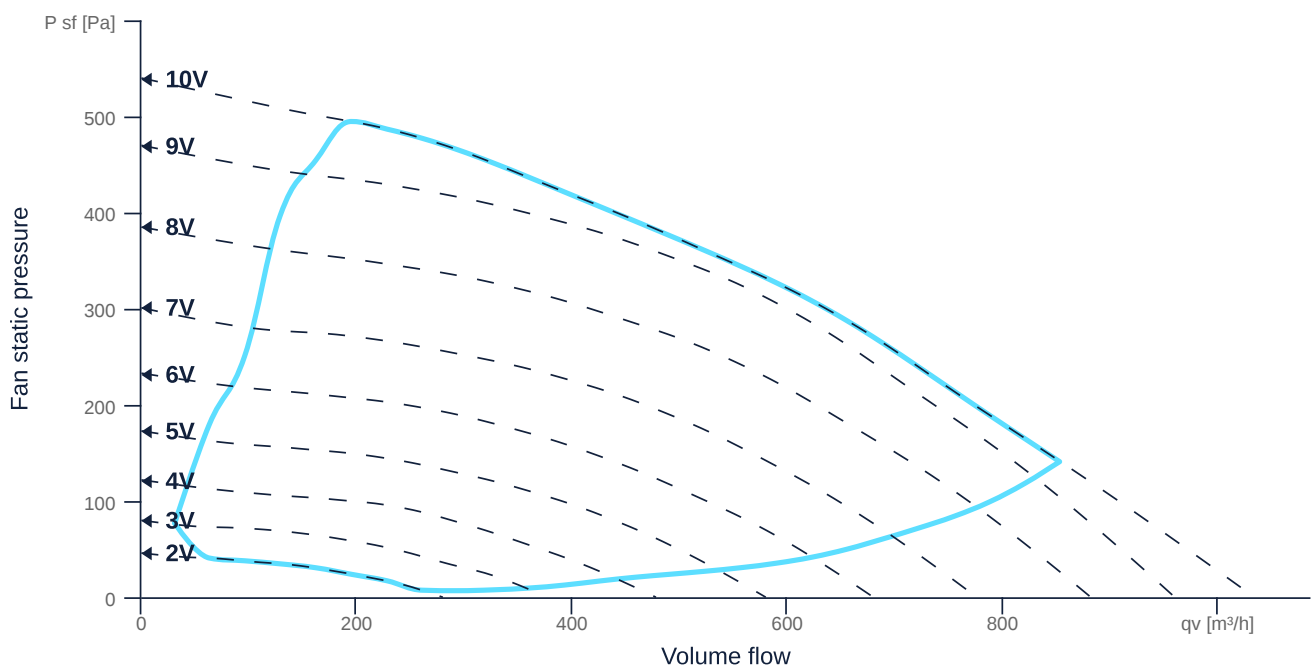
MPC 225 EC O K 01

166481

- Radial fan with backward curved impeller
- Variable discharge direction right / left / linear
- Double wall housing made of galvanized steel sheet, insulated
- Highly efficient EC motor, steplessly controllable
- Internal electronic temperature monitoring
- With bottom tray



MAP



zur Produktseite

MPC 225 EC O K 01

166481

GENERAL DATA

Name	Value	Unit	Formula symbol
ERP conformity	Yes		
Duct size	-		WxHduct
Pipe connection size (DN)	-		DN
Electrical protection (entire device)	6 A		fuse
Housing material	Steel		matcasing
Impeller material	Plastic		matimpeller
IP-protection class (entire device)	IPX4		IPcompl
IP-Protection class (terminal box)	IP44		IPebox
Weight	27.7	kg	m
Nominal air flow rate, nominal point m³/h	525.6	m³/h	qvnom
Nominal external pressure, static	243.7	Pa	ps,nom
Fan type	Radial		Fanetype
Category / Installation situation	A		cat
Sound insulation	Yes		sndins
Rated voltage (entire device)	230	V	Urated
Phases (entire device)	1~		phase

MOTOR DATA

Name	Value		Unit	Formula symbol
	50 Hz	60 Hz		
Rated frequency (device)	50.000000			f
Motor type	EC			phase
Control type	stepless-controlled			ctrltype
Installation	ORM (Out)			install
Rotation direction	right			rotation
Isolation class	ISO F			ISOclass
Motor-protection	TEC			protectmotor
Protection class	IP54			IPmotor
Is pole-changeable	No			polexch
Type of power supply	AC 1~			pwrsupmotor
Rated voltage	230		V	Urated, f1
Rated current	0.89		A	Irated, f1
Shaft power	113		W	Pout, f1
Speed	2908		1/min	n1
Efficiency	48.7		%	ηm, f1
Cos Phi	0.000000	0.000000		cos φ
UL-Certification motor	None			ULcert



zur Produktseite

MPC 225 EC O K 01

166481

PRODUCT INFORMATION

Name	Value	Unit	Formula symbol
Category / Installation situation	A		cat
Fan type	Radial		Fan _{type}



zur Produktseite