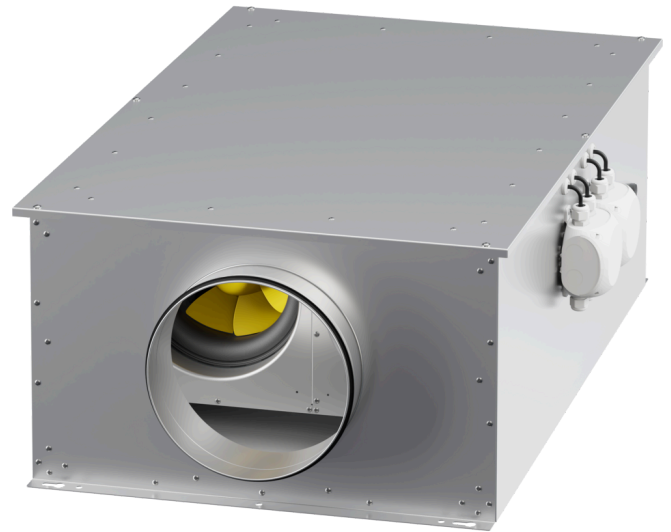


# EM DUO 280 EC K 01

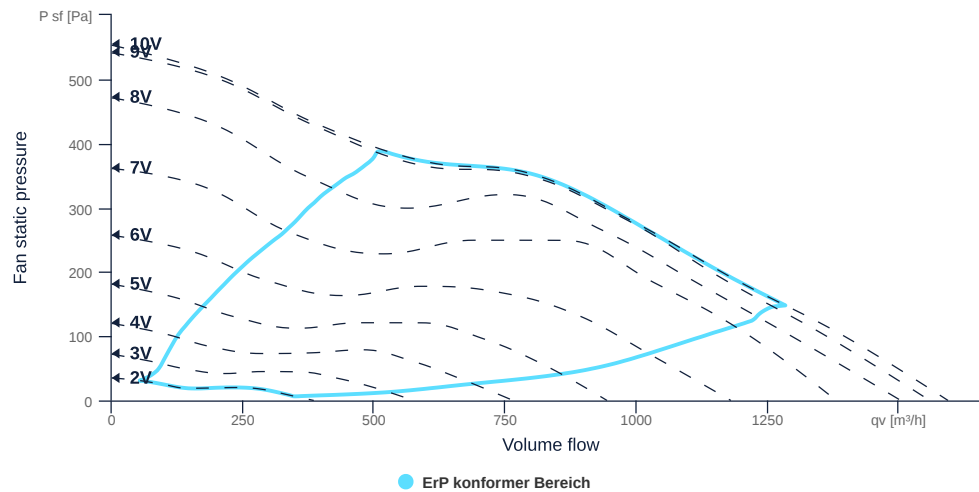
172179

- Efficient diagonal fan, redundant operation
- Optimally tuned and CFD-optimized aerodynamics
- Soundproof housing made of galvanized sheet steel
- High efficiency EC motor, steplessly controllable
- Built-in ETAMASTER with highest efficiency
- Suitable for outdoor installation



## FAN CURVES

Name	Value	Unit
Volume flow	0	m³/h
Pressure	0	Pa



to the product detail page

# EM DUO 280 EC K 01

172179

**ruck**

## GENERAL DATA

Name	Value	Unit	Formula symbol	
Labeling		CE		
Duct size		-	WxHduct	
Pipe connection size (DN)		DN280	DN	
Rated voltage (entire device)		230	V	U <sub>rated</sub>
Phases (entire device)		1~		phase
Electrical protection (entire device)		6 A		fuse
Housing material		Galvanized steel		mat <sub>casing</sub>
Impeller material		Plastic		mat <sub>impeller</sub>
IP-protection class (casing)		IPX4		IP <sub>casing</sub>
IP-protection class (entire device)		IPX4		IP <sub>compl</sub>
IP-Protection class (terminal box)		IP55		IP <sub>ebox</sub>
Weight		38.95	kg	m
Nominal air flow rate, nominal point m <sup>3</sup> /h		1285.2	m <sup>3</sup> /h	q <sub>v,nom</sub>
Nominal external pressure, static		148	Pa	p <sub>s,nom</sub>
Fan type		Diagonal		Fan <sub>type</sub>
Category / Installation situation		B		cat

## ERP DATA (LOT 6)

Name	Value	Unit	Formula symbol	
Nominal air flow rate, nominal point m <sup>3</sup> /s		0.36	m <sup>3</sup> /s	q <sub>v,nom</sub>
Actual electrical input power, nominal point		0.17	kW	P <sub>e,nom</sub>
Face velocity, nominal point		5.79	m/s	v <sub>nom</sub>
Nominal external pressure, static		148	Pa	p <sub>s,nom</sub>
static efficiency of the extract fan, nominal point		31.04	%	η <sub>es,EHA</sub>
Highest external air leakage rate		0.26	%	
Enclosure sound level, nominal point		55.37	dba	L <sub>WA2</sub>
Rating		Product is compliant 2018		



to the product detail page

# EM DUO 280 EC K 01

172179

**ruck**

## MAXIMAL DATA

Name	Value		Unit	Formula symbol
	50 Hz	60 Hz		
Max. power consumption (device)	176	176	W	$P_{ed, max}$
Max. operating current (device)	1.51	1.51	A	$I_{ed, max}$
Max. speed	3400	3400	1/min	$n_{max}$
Max. stat. efficiency	46.7	46.7	%	$\eta_{es}$
Max. fan efficiency	48.3	48.3	%	$\eta_e$
Max. flowrate	1590	1590	m <sup>3</sup> /h	$q_{v, max}$
Max. stat pressure	550	550	Pa	$p_{sf, max}$
Max. medium temperature	50	50	°C	$T_{m, max}$
Max. environment temperature	50	50	°C	$T_{amb, max}$
Min. environment temperature	-30	-30	°C	$T_{amb, min}$

## MOTOR DATA

Name	Value		Unit	Formula symbol
	50 Hz	60 Hz		
Rated frequency (device)		50		f
Motor type		EC		phase
Control type		stepless-controlled		ctrltype
Installation type		ORM (Out)		install
Rotation direction		right		rotation
Isolation class		ISO F		ISOclass
Motor-protection		TEC		protectmotor
Protection class		IP54		IP <sub>motor</sub>
Is pole-changeable		No		polexch
Type of power supply		AC 1~		pwrsupmotor
Rated voltage	230	230	V	$U_{rated, f1}$
Rated current	1.42	1.42	A	$I_{rated, f1}$
Shaft power	189	189	W	$P_{out, f1}$
Speed	3279	3279	1/min	$n_{f1}$
Efficiency	52.5	52.5	%	$\eta_{m, f1}$
Min. temperature	-30	-30	°C	$T_{motor, min}$
Cos Phi	0.580000	1.420000		$\cos \varphi$
UL-Certification motor		None		ULcert



to the product detail page