

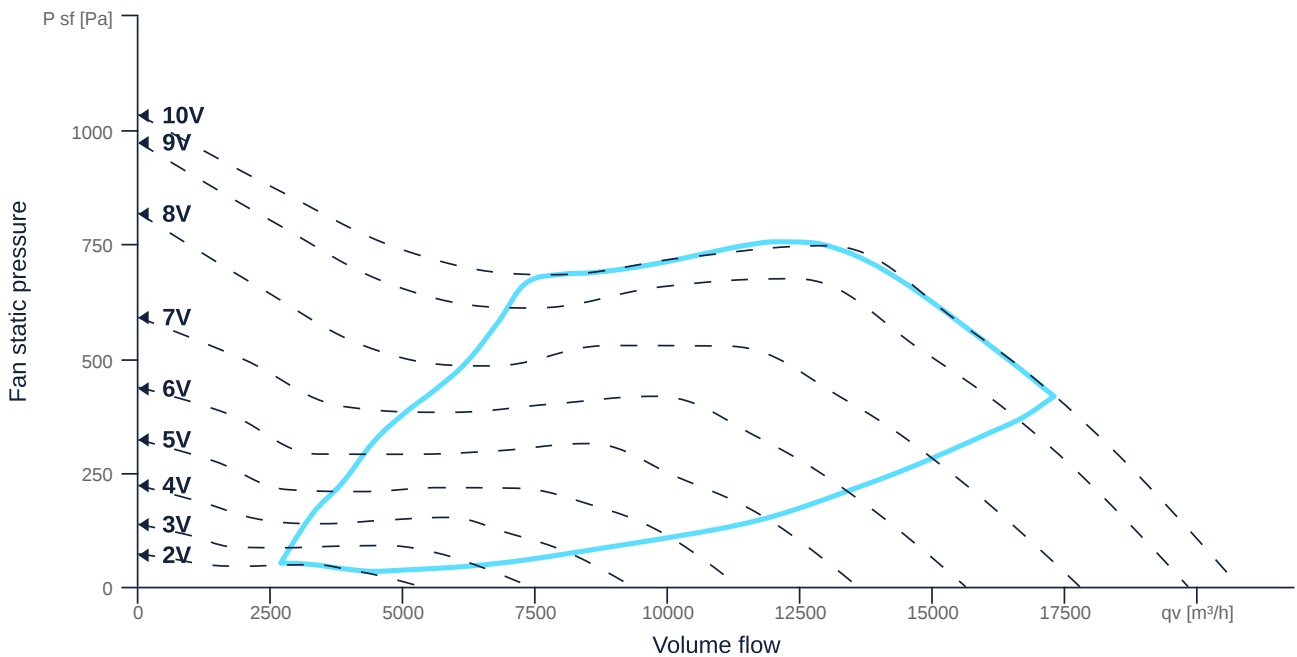
EL 710 EC O 01

163102

- Innovative, high-efficiency diagonal fan
- Optimally tuned, CFD-optimized aerodynamics
- The benchmark for efficiency since 2007
- High efficiency EC motor, steplessly controllable
- Conveyed medium temperature up to 60 °C in continuous operation
- Housing made of aluminum



MAP



GENERAL DATA

Name	Value	Unit	Formula symbol
Duct size	-		WxH _{duct}
Pipe connection size (DN)	DN710		DN
Electrical protection (entire device)	20 A		fuse
Housing material	Aluminium		mat _{casing}
Impeller material	Aluminium		mat _{impeller}
Weight	56.5	kg	m
Fan type	Diagonal		Fan _{type}
Category / Installation situation	B		cat
Sound insulation	No		snd _{ins}
Rated voltage (entire device)	400.000000		U _{rated}
Phases (entire device)	3~		phase



zur Produktseite

MAXIMAL DATA

Name	Value		Unit	Formula symbol
	50 Hz	60 Hz		
Max. power consumption (device)	3830	3830	W	P _{ed, max}
Max. operating current (device)	5.9	5.9	A	I _{ed, max}
Max. speed	1500	1500	1/min	n _{max}
Max. stat. efficiency	67.3	67.3	%	η _{es}
Max. fan efficiency	72.2	72.2	%	η _e
Max. flowrate	20780	20780	m³/h	Q _{v, max}
Max. stat pressure	1035	1035	Pa	p _{sf, max}
Max. medium temperature	60	60	°C	T _{m, max}
Max. environment temperature	60	60	°C	T _{amb, max}
Min. environment temperature	-20	-20	°C	T _{amb, min}

MOTOR DATA

Name	Value		Unit	Formula symbol
	50 Hz	60 Hz		
Rated frequency (device)	50.000000			f
Motor type	EC			phase
Control type	stepless-controlled			ctrltype
Installation	IRM (In)			install
Rotation direction	right			rotation
Isolation class	ISO F			ISOclass
Motor-protection	TEC			protect _{motor}
Protection class	IP55			IP _{motor}
Is pole-changeable	No			polexch
Type of power supply	AC 3~			pwr _{sup} _{motor}
Rated voltage	400		V	U _{rated, f1}
Rated current	8.5		A	I _{rated, f1}
Shaft power	4000		W	P _{out, f1}
Speed	1500		1/min	n _{f1}
Efficiency	91.8		%	η _{m, f1}
Cos Phi	0.000000	0.000000		cos φ

PRODUCT INFORMATION

Name	Value	Unit	Formula symbol
Category / Installation situation	B		cat
Fan type	Diagonal		Fan _{type}



zur Produktseite

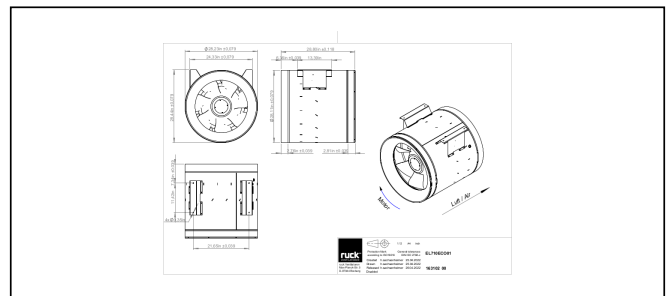
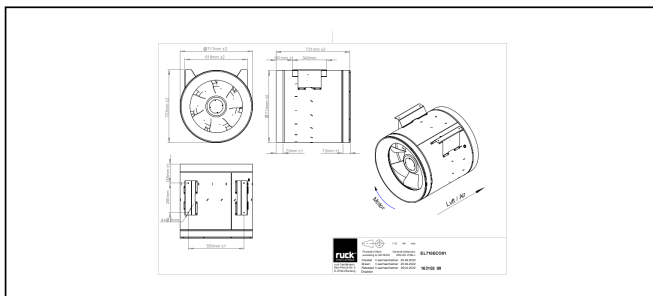
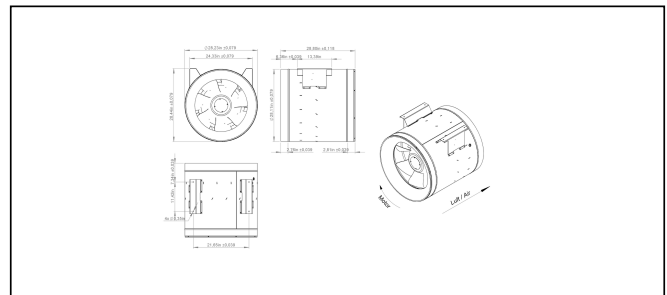
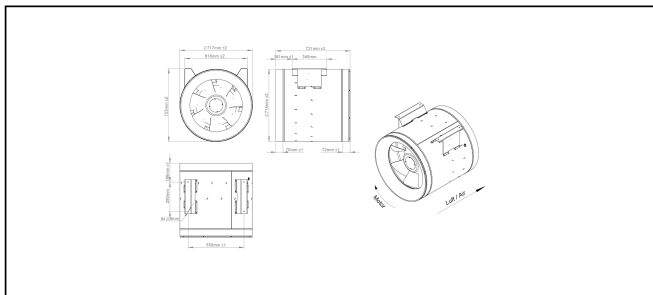
EL 710 EC O 01

163102

ERP DATA

Name	Value	Unit	Formula symbol
Speed at the energy efficiency optimum	1501	1/min	n_{opt}
Efficiency level	74.6	%	N
Efficiency category	total		η_{total}
Input power of the motor at the energy efficiency optimum	3.77	kW	$P_{e, opt}$
Overall efficiency	79.1	%	η_{ges}
Measurement category	B		meas cat
Fan pressure at optimum energy efficiency point	705	Pa	$p_{f, opt}$
Flowrate at energy efficiency optimum	13940	m ³ /h	$Q_{v, opt}$

SCHALTPLÄNE / MASSZEICHNUNGEN



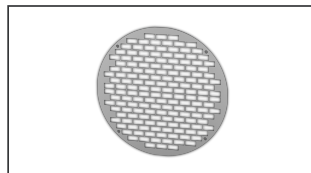
MECHANICAL ACCESSORIES

VM 710 | 119498



- Fast clamps for sound decoupling and sealing
- Galvanized steel sheet, 5 mm
- Neopren gasket
- 1 Pack = 2 pieces

SG 710 02 | 119414



- Inlet protection grille for Etaline
- Galvanized steel sheet

CLIMASET 01 | 111314



- Climaset
- For differential pressure measurement

zur Produktseite



ELECTRICAL ACCESSORIES

GS 03 | 107633



- Device switch
- $U_{max} = 400\text{ V}$, $I_{max} = 25\text{ A}$
- Switching capacity $400\text{ V } 3\text{-} = 5,5\text{ kW}$
- Protection class IP 55

MTP 20 | 128146



- Potentiometer $10\text{ k}\Omega$
- Switching contact $1\text{A}/250\text{V AC}$ - $2,5\text{A}/12\text{V DC}$
- Max. ambient temperature $50\text{ }^\circ\text{C}$
- VDE

MTP 30 | 143289



- Stepped potentiometer $10\text{ k}\Omega$
- Step 1 + 2 settable $10\% - 100\% \text{ Vdc}$
- Step 3 $100\% \text{ Vdc}$
- Supply voltage $+10\text{ Vdc}$

MTP 40 | 147359



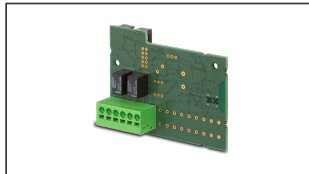
- Potentiometer $10\text{ k}\Omega$
- Connection in terminal box
- Max. ambient temperature $50\text{ }^\circ\text{C}$
- PU: 20 pieces

CON P1000 | 115259



- Constant pressure control
- Actual value display possible via optional control unit
- Output $0\text{-}10\text{ V DC}$ + FC enable + setpoint reached
- Pressure setting by means of decade switch

OJ RM 02 | 141890



- Extension board Relais Modul
- For EC controller for alarm and operating message
- Electrical connection through 6 spring terminals (max. $2,5\text{ mm}^2$)
- Digital relay outputs: 2 potential-free changeover relays, max. 1 A , 30 V DC / 24 V AC

MTP 50 | 153133



- Potentiometer with multifunction output
- $230\text{ VAC } \pm 10\% / 50\text{-}60\text{ Hz}$
- Selectable output: $1\text{-}10\text{ VDC}$ / $2\text{-}20\text{ mA}$ / $10\text{-}100\% \text{ PWM}$
- Min. and max. output value adjustable



zur Produktseite