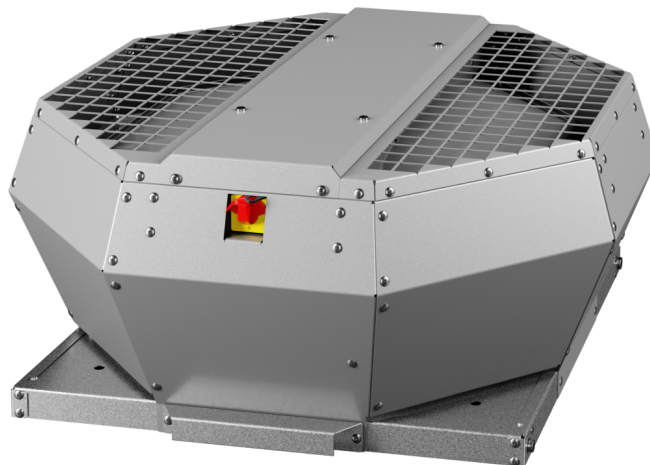


DVA 280 ECP 31

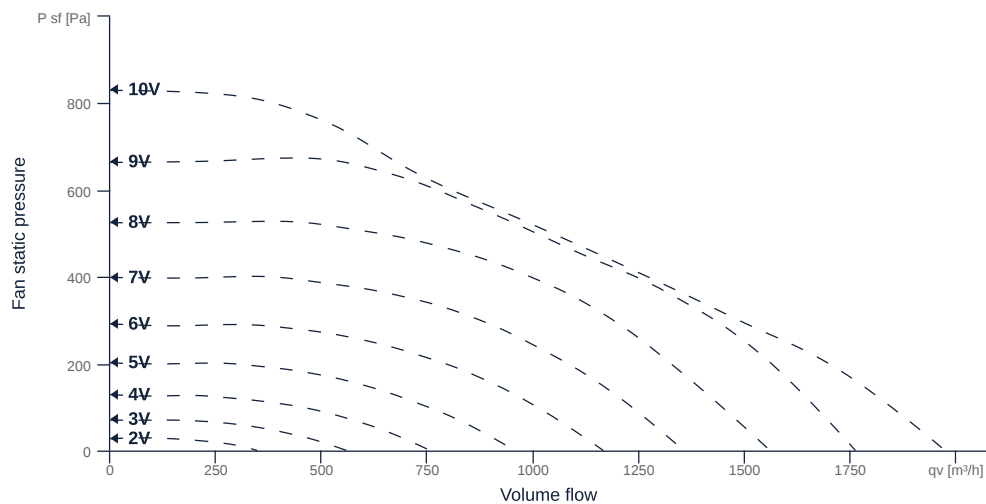
139179

- Backward curved radial impeller
- Vertical discharge
- Housing made of aluminum AlMg3
- High efficiency EC motor, steplessly controllable
- Conveyed medium temperature up to 55 °C in continuous operation
- Integrated device switch



MAP

Name	Value	Unit
Volume flow	0	m³/h
Pressure	0	Pa



zur Produktseite

DVA 280 ECP 31

139179

ruck

GENERAL DATA

Name	Value	Unit	Formula symbol
ERP conformity	Yes		
Duct size	-		WxHduct
Pipe connection size (DN)	-		DN
Rated voltage (entire device)	230	V	U _{rated}
Phases (entire device)	1~		phase
Electrical protection (entire device)	6 A		fuse
Housing material	Aluminium		matcasing
Impeller material	Galvanized steel		matimpeller
IP-Protection class (terminal box)	IP44		IPebox
Weight	8.25	kg	m
Nominal air flow rate, nominal point m ³ /h	889.2	m ³ /h	q _{v,nom}
Nominal external pressure, static	343.2	Pa	p _{s,nom}
Fan type	Radial		Fantype
Category / Installation situation	A		cat

ERP DATA (LOT 6)

Name	Value	Unit	Formula symbol
Nominal air flow rate, nominal point m ³ /s	0.25	m ³ /s	q _{v,nom}
Actual electrical input power, nominal point	0.16	kW	P _{e,nom}
Face velocity, nominal point	2.8	m/s	v _{nom}
Nominal external pressure, static	343.2	Pa	p _{s,nom}
supply air fan static efficiency, nominal point	58.8	%	η _{es,SUP}
Enclosure sound level, nominal point	86	dB(A)	L _{WA2}
Rating	Product is compliant 2018		

zur Produktseite

