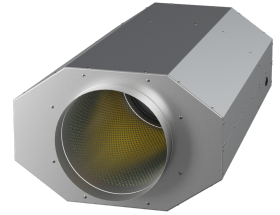


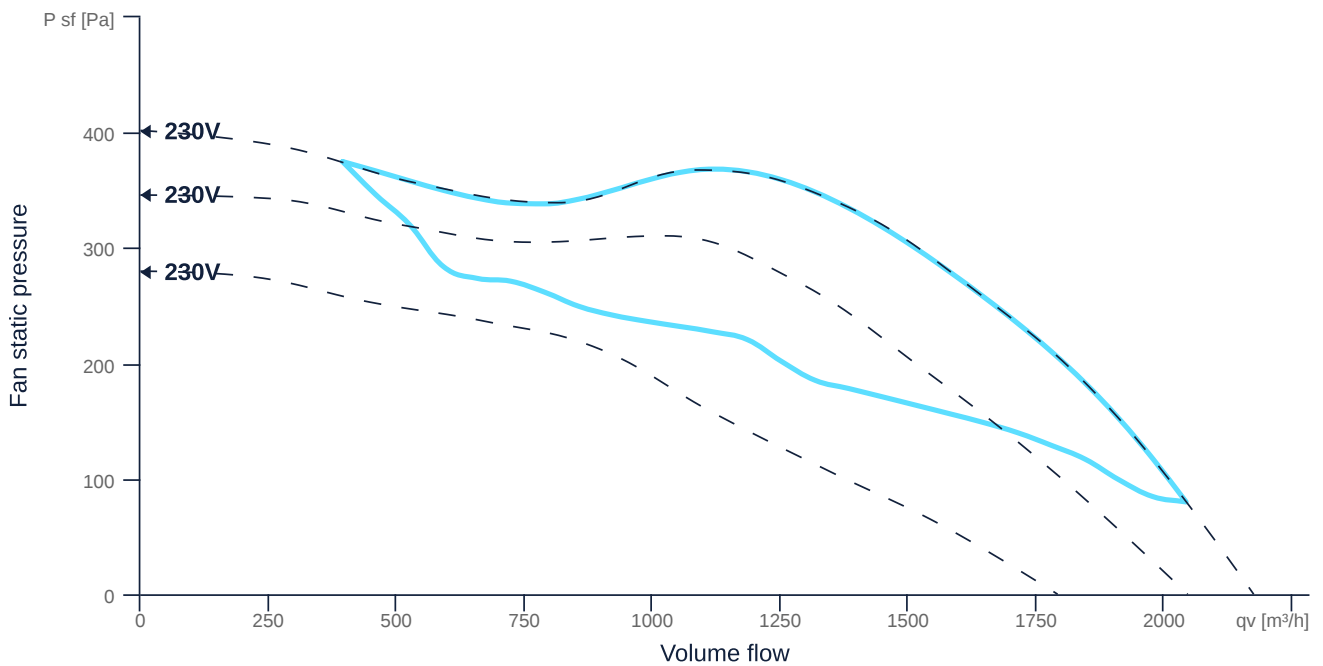
EMI 280 E2M O 01

158271

- High-efficiency, insulated diagonal fan
- Optimum sound attenuation due to silencer
- Very compact housing made of galvanized sheet steel
- Robust AC motor, 3-steps controllable
- Highest aerodynamic efficiency
- Conveyed medium temperature up to 60 °C in continuous operation



MAP



GENERAL DATA

Name	Value	Unit	Formula symbol
ERP conformity	Yes		
Duct size	-		WxHduct
Pipe connection size (DN)	DN280		DN
Electrical protection (entire device)	6 A		fuse
Housing material	Galvanized steel		matcasing
Impeller material	Plastic		matimpeller
Weight	20.1	kg	m
Fan type	Diagonal		Fan _{type}
Category / Installation situation	B		cat
Sound insulation	Yes		snd _{ins}
Rated voltage (entire device)	230	V	U _{rated}
Phases (entire device)	1~		phase



zur Produktseite

EMI 280 E2M O 01

158271

MOTOR DATA

Name	Value		Unit	Formula symbol
	50 Hz	60 Hz		
Rated frequency (device)	50.000000			f
Motor type	AC 1~			phase
Installation	IRM (In)			install
Rotation direction	right			rotation
Isolation class	ISO F			ISOclass
Motor-protection	TAI			protectmotor
Protection class	IP00			IPmotor
Is pole-changeable	No			polexch
Type of power supply	AC 1~			pwrsupmotor
Capacity condenser	10		μF	Ccond
Voltage condenser	450		V	VUcond
Number of poles (1)	2.000000			num polesw1
Rated voltage	230		V	Urated, f1
Rated current	1.2		A	Irated, f1
Shaft power	180		W	Pout, f1
Cos Phi	0.000000	0.000000		cos φ
UL-Certification motor	None			ULcert

PRODUCT INFORMATION

Name	Value	Unit	Formula symbol
Category / Installation situation	B		cat
Fan type	Diagonal		Fan _{type}

ERP DATA (LOT11)

Name	Value	Unit	Formula symbol
Speed at the energy efficiency optimum	2780	1/min	n _{opt}
Efficiency level	60.9	%	N
Efficiency category	total		catefficiency
Input power of the motor at the energy efficiency optimum	0.22	kW	P _{e, opt}
Overall efficiency	78.3	%	η _{ges}
Measurement category	B		meas cat
Fan pressure at optimum energy efficiency point	365	Pa	p _{f, opt}
Flowrate at energy efficiency optimum	1213	m³/h	q _{v, opt}



zur Produktseite