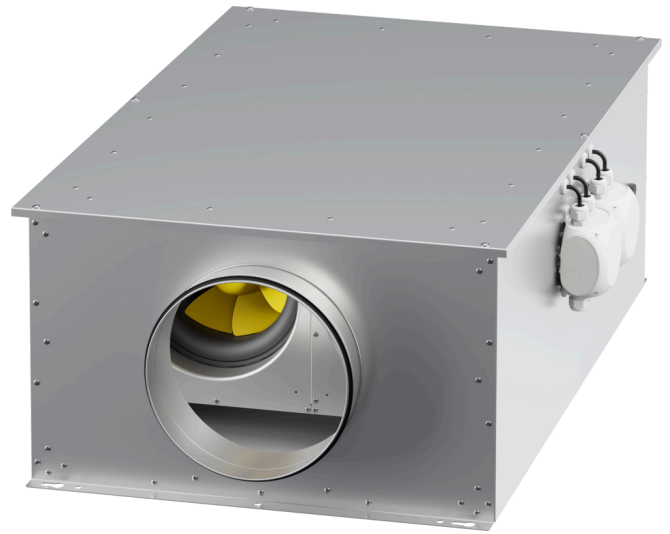


# EM DUO 315 EC K 01

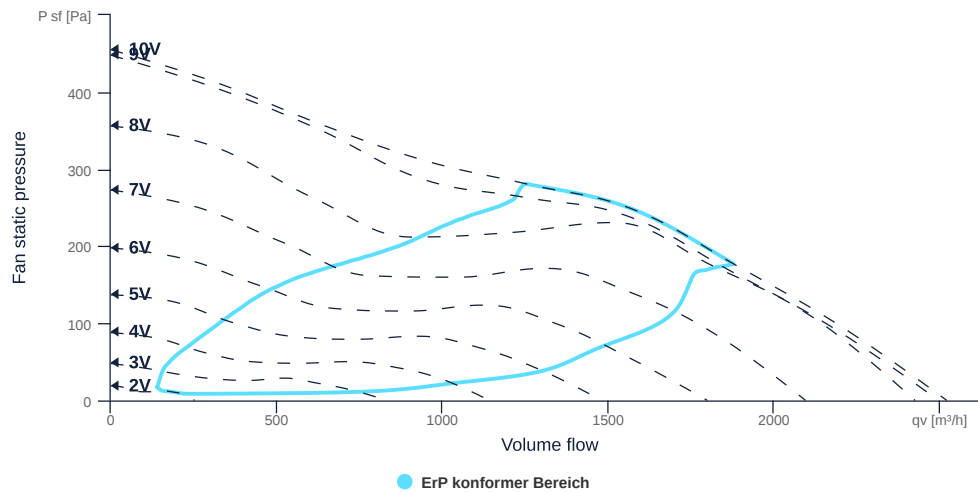
172564

- Efficient diagonal fan, redundant operation
- Optimally tuned and CFD-optimized aerodynamics
- Soundproof housing made of galvanized sheet steel
- High efficiency EC motor, steplessly controllable
- Built-in ETAMASTER with highest efficiency
- Suitable for outdoor installation



## FAN CURVES

Name	Value	Unit
Volume flow	0	m³/h
Pressure	0	Pa



to the product detail page

# EM DUO 315 EC K 01

172564

**ruck**

## GENERAL DATA

Name	Value	Unit	Formula symbol	
Labeling		CE		
Duct size		-	WxHduct	
Pipe connection size (DN)		DN315	DN	
Rated voltage (entire device)		230	V	U <sub>rated</sub>
Phases (entire device)		1~		phase
Electrical protection (entire device)		6 A		fuse
Housing material		Galvanized steel		matcasing
Impeller material		Plastic		matimpeller
IP-protection class (casing)		IPX4		IP <sub>casing</sub>
IP-protection class (entire device)		IPX4		IP <sub>compl</sub>
IP-Protection class (terminal box)		IP55		IP <sub>ebox</sub>
Weight		69.75	kg	m
Nominal air flow rate, nominal point m <sup>3</sup> /h		1879.2	m <sup>3</sup> /h	q <sub>v,nom</sub>
Nominal external pressure, static		177	Pa	p <sub>s,nom</sub>
Fan type		Diagonal		Fantype
Category / Installation situation		B		cat

## ERP DATA (LOT 6)

Name	Value	Unit	Formula symbol	
Nominal air flow rate, nominal point m <sup>3</sup> /s		0.52	m <sup>3</sup> /s	q <sub>v,nom</sub>
Actual electrical input power, nominal point		0.27	kW	P <sub>e,nom</sub>
Face velocity, nominal point		6.69	m/s	v <sub>nom</sub>
Nominal external pressure, static		177	Pa	p <sub>s,nom</sub>
static efficiency of the extract fan, nominal point		33.98	%	η <sub>es,EHA</sub>
Highest external air leakage rate		0.16	%	
Enclosure sound level, nominal point		57.28	dba	LWA2
Rating		Product is compliant 2018		



to the product detail page

## MAXIMAL DATA

Name	Value		Unit	Formula symbol
	50 Hz	60 Hz		
Max. power consumption (device)	270	270	W	P <sub>ed, max</sub>
Max. operating current (device)	1.88	1.88	A	I <sub>ed, max</sub>
Max. speed	2210	2210	1/min	n <sub>max</sub>
Max. stat. efficiency	39.6	39.6	%	η <sub>es</sub>
Max. fan efficiency	43.2	43.2	%	η <sub>e</sub>
Max. flowrate	2520	2520	m <sup>3</sup> /h	q <sub>v, max</sub>
Max. stat pressure	455	455	Pa	p <sub>sf, max</sub>
Max. medium temperature	35	35	°C	T <sub>m, max</sub>
Max. environment temperature	35	35	°C	T <sub>amb, max</sub>
Min. environment temperature	-30	-30	°C	T <sub>amb, min</sub>

## MOTOR DATA

Name	Value		Unit	Formula symbol
	50 Hz	60 Hz		
Rated frequency (device)		50		f
Motor type		EC		phase
Control type		stepless-controlled		ctrltype
Installation type		ORM (Out)		install
Rotation direction		right		rotation
Isolation class		ISO F		ISOclass
Motor-protection		TEC		protectmotor
Protection class		IP30		IP <sub>motor</sub>
Is pole-changeable		No		polexch
Type of power supply		AC 1~		p <sub>wsup</sub> <sub>motor</sub>
Rated voltage	230	230	V	U <sub>rated, f1</sub>
Rated current	1.61	1.61	A	I <sub>rated, f1</sub>
Shaft power	253	253	W	P <sub>out, f1</sub>
Speed	1946	1946	1/min	n <sub>f1</sub>
Min. temperature	-30	-30	°C	T <sub>motor, min</sub>
UL-Certification motor		None		ULcert



to the product detail page