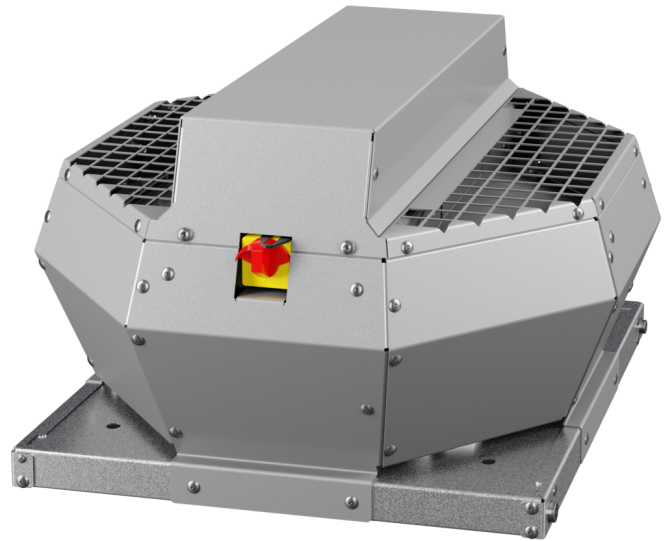


DVA 220 EC O CRK 01

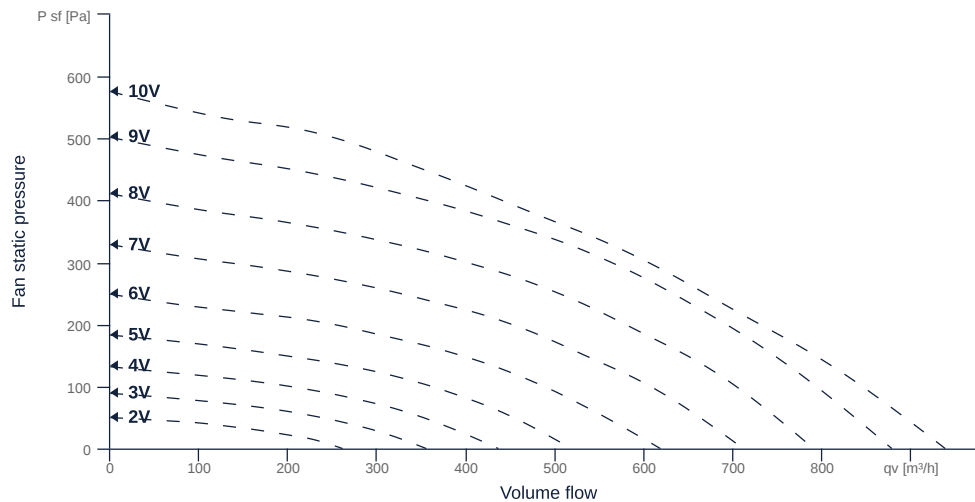
166190

- Backward curved radial impeller
- Vertical discharge
- Hinged housing made of aluminium AlMg3
- High efficiency EC motor, steplessly controllable
- Conveyed medium temperature up to 60 °C in continuous operation
- Integrated constant pressure control, Integrated device switch



MAP

Name	Value	Unit
Volume flow	0	m³/h
Pressure	0	Pa



zur Produktseite

DVA 220 EC O CRK 01

166190

ruck

GENERAL DATA

Name	Value	Unit	Formula symbol
ERP conformity	Yes		
Duct size	-		WxHduct
Pipe connection size (DN)	-		DN
Rated voltage (entire device)	230	V	U _{rated}
Phases (entire device)	1~		phase
Electrical protection (entire device)	6 A		fuse
Housing material	Aluminium		matcasing
Impeller material	Plastic		matimpeller
IP-Protection class (terminal box)	IP44		IPebox
Weight	5.26	kg	m
Nominal air flow rate, nominal point m ³ /h	432	m ³ /h	Q _{v,nom}
Nominal external pressure, static	210.8	Pa	p _{s,nom}
Fan type	Radial		Fantype
Category / Installation situation	A		cat

ERP DATA (LOT 6)

Name	Value	Unit	Formula symbol
Nominal air flow rate, nominal point m ³ /s	0.12	m ³ /s	Q _{v,nom}
Actual electrical input power, nominal point	0.05	kW	P _{e,nom}
Face velocity, nominal point	2.9	m/s	V _{nom}
Nominal external pressure, static	210.8	Pa	p _{s,nom}
supply air fan static efficiency, nominal point	42.7	%	η _{es,SUP}
Enclosure sound level, nominal point	76	dB(A)	L _{WA2}
Rating	Product is compliant 2018		



zur Produktseite