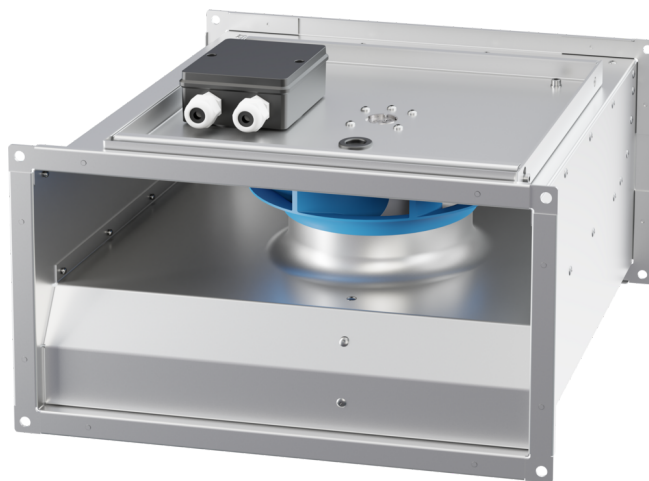


# KVR 3015 EC O K 01

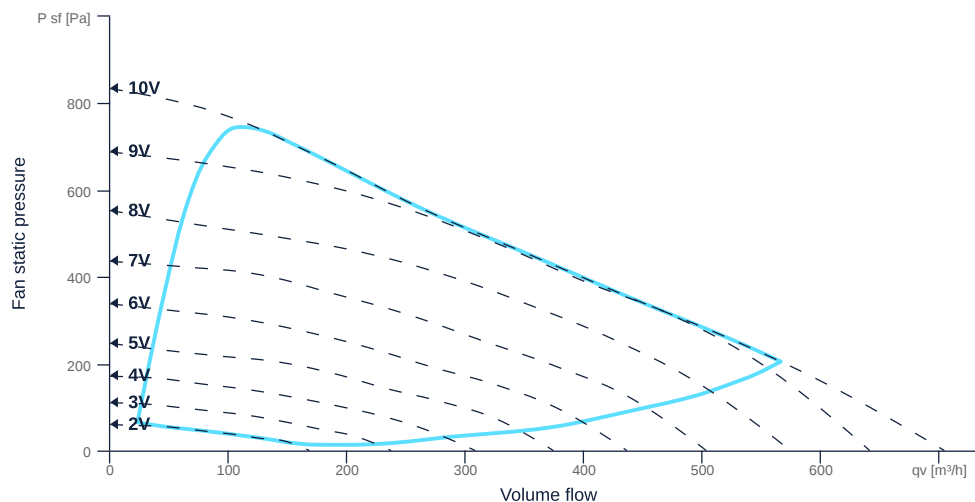
165198

- Backward curved radial impeller
- Removable fan unit
- Housing made of galvanized sheet steel
- High efficiency EC motor, steplessly controllable, external rotor
- Conveying medium temperature up to 50 °C in continuous operation
- Internal electronic temperature monitoring



## MAP

Name	Value	Unit
Volume flow	0	m³/h
Pressure	0	Pa



zur Produktseite

# KVR 3015 EC O K 01

165198

**ruck**

## GENERAL DATA

Name	Value	Unit	Formula symbol
ERP conformity	Yes		
Duct size	300x150		WxH <sub>duct</sub>
Pipe connection size (DN)	-		DN
Rated voltage (entire device)	230	V	U <sub>rated</sub>
Phases (entire device)	1~		phase
Electrical protection (entire device)	6 A		fuse
Housing material	Galvanized steel		mat <sub>casing</sub>
Impeller material	Plastic		mat <sub>impeller</sub>
Weight	6.2	kg	m
Nominal air flow rate, nominal point m <sup>3</sup> /h	129.6	m <sup>3</sup> /h	q <sub>v,nom</sub>
Nominal external pressure, static	296	Pa	p <sub>s,nom</sub>
Fan type	Radial		Fan <sub>type</sub>
Category / Installation situation	B		cat

## ERP DATA (LOT 6)

Name	Value	Unit	Formula symbol
Nominal air flow rate, nominal point m <sup>3</sup> /s	0.04	m <sup>3</sup> /s	q <sub>v,nom</sub>
Actual electrical input power, nominal point	0.03	kW	P <sub>e,nom</sub>
Face velocity, nominal point	0.8	m/s	V <sub>nom</sub>
Nominal external pressure, static	296	Pa	p <sub>s,nom</sub>
supply air fan static efficiency, nominal point	46.3	%	η <sub>es,SUP</sub>
Highest external air leakage rate	5.67	%	
Rating	Product is compliant 2018		



zur Produktseite