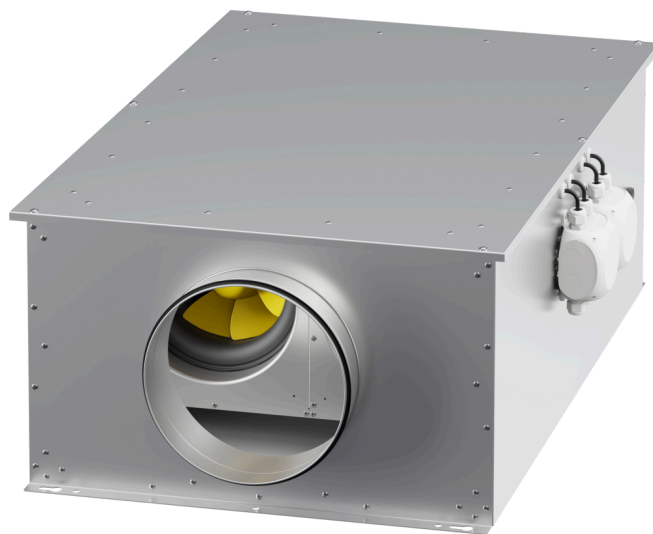


EM DUO 400 EC K 01

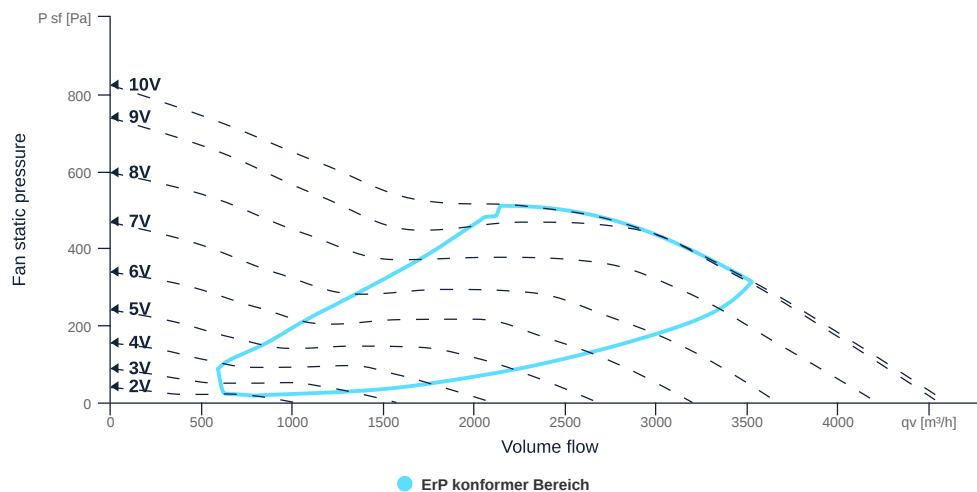
172646

- Efficient diagonal fan, redundant operation
- Optimally tuned and CFD-optimized aerodynamics
- Soundproof housing made of galvanized sheet steel
- High efficiency EC motor, steplessly controllable
- Built-in ETAMASTER with highest efficiency
- Suitable for outdoor installation



FAN CURVES

Name	Value	Unit
Volume flow	0	m³/h
Pressure	0	Pa



to the product detail page

EM DUO 400 EC K 01

172646

ruck

GENERAL DATA

Name	Value	Unit	Formula symbol	
Labeling		CE		
Duct size		-	WxHduct	
Pipe connection size (DN)		DN400	DN	
Rated voltage (entire device)		230	V	U _{rated}
Phases (entire device)		1~		phase
Electrical protection (entire device)		6 A		fuse
Housing material		Galvanized steel		matcasing
Impeller material		Plastic		matimpeller
IP-protection class (casing)		IPX4		IP _{casing}
IP-protection class (entire device)		IPX4		IP _{compl}
IP-Protection class (terminal box)		IP55		IP _{ebox}
Weight		90.5	kg	m
Nominal air flow rate, nominal point m ³ /h		3524.4	m ³ /h	q _{v,nom}
Nominal external pressure, static		313	Pa	p _{s,nom}
Fan type		Diagonal		Fantype
Category / Installation situation		B		cat

ERP DATA (LOT 6)

Name	Value	Unit	Formula symbol	
Nominal air flow rate, nominal point m ³ /s		0.98	m ³ /s	q _{v,nom}
Actual electrical input power, nominal point		0.76	kW	P _{e,nom}
Face velocity, nominal point		7.79	m/s	v _{nom}
Nominal external pressure, static		313	Pa	p _{s,nom}
static efficiency of the extract fan, nominal point		40.31	%	η _{es,EHA}
Highest external air leakage rate		0.1	%	
Enclosure sound level, nominal point		64.11	dba	LWA2
Rating		Product is compliant 2018		



to the product detail page

EM DUO 400 EC K 01

172646

ruck

MAXIMAL DATA

Name	Value		Unit	Formula symbol
	50 Hz	60 Hz		
Max. power consumption (device)	719	719	W	P _{ed, max}
Max. operating current (device)	3.3	3.3	A	I _{ed, max}
Max. speed	2600	2600	1/min	n _{max}
Max. stat. efficiency	48	48	%	η _{es}
Max. fan efficiency	50.5	50.5	%	η _e
Max. flowrate	4600	4600	m ³ /h	Q _{v, max}
Max. stat pressure	820	820	Pa	p _{sf, max}
Max. medium temperature	60	60	°C	T _{m, max}
Max. environment temperature	60	60	°C	T _{amb, max}
Min. environment temperature	-25	-25	°C	T _{amb, min}

MOTOR DATA

Name	Value		Unit	Formula symbol
	50 Hz	60 Hz		
Rated frequency (device)		50		f
Motor type		EC		phase
Control type		stepless-controlled		ctrltype
Installation type		ORM (Out)		install
Rotation direction		right		rotation
Isolation class		ISO F		ISOclass
Motor-protection		TEC		protectmotor
Protection class		IP20		IP _{motor}
Is pole-changeable		No		polexch
Type of power supply		AC 1~		pwr _{sup} motor
Rated voltage	230	230	V	U _{rated, f1}
Rated current	3.3	3.3	A	I _{rated, f1}
Shaft power	600	600	W	P _{out, f1}
Speed	2300	2300	1/min	n _{f1}
UL-Certification motor		UL recognized		ULcert



to the product detail page