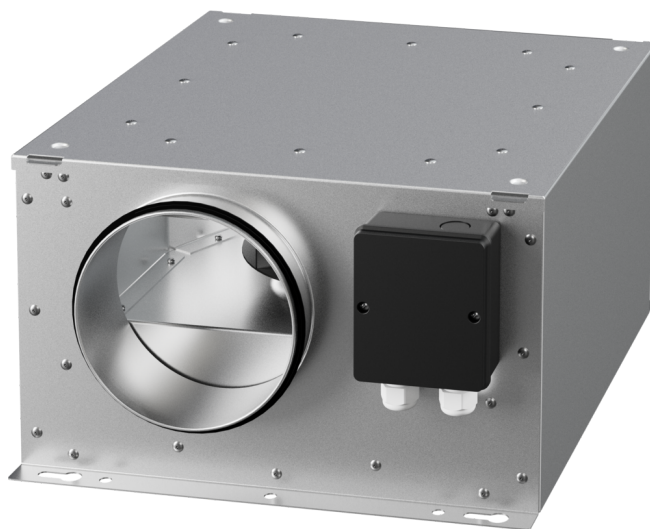


ISOR 250 EC 20

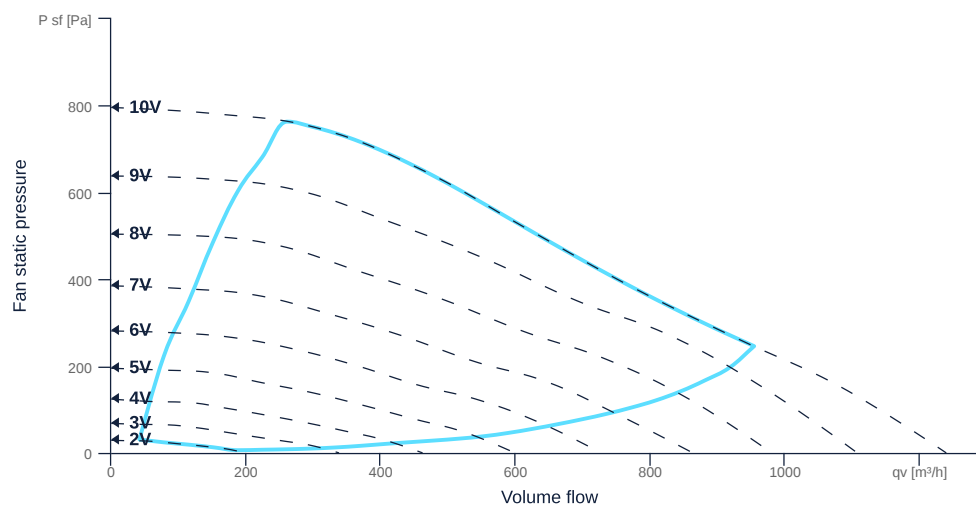
132590

- Radial fan
- Backward curved impeller
- Sheet steel housing, very high sound insulation
- High efficiency EC motor, steplessly controllable
- Conveyed medium temperature up to 70 °C in continuous operation
- Swing out fan unit



MAP

Name	Value	Unit
Volume flow	0	m³/h
Pressure	0	Pa



zur Produktseite

GENERAL DATA

Name	Value	Unit	Formula symbol
ERP conformity	Yes		
Duct size	-		WxHduct
Pipe connection size (DN)	DN250		DN
Rated voltage (entire device)	230	V	U _{rated}
Phases (entire device)	1~		phase
Electrical protection (entire device)	6 A		fuse
Housing material	Galvanized steel		mat _{casing}
Impeller material	Plastic		mat _{impeller}
IP-Protection class (terminal box)	IP44		IP _{ebox}
Weight	18.9	kg	m
Nominal air flow rate, nominal point m ³ /h	561.6	m ³ /h	q _{v,nom}
Nominal external pressure, static	382.6	Pa	p _{s,nom}
Fan type	Radial		Fan _{type}
Category / Installation situation	A		cat

ERP DATA (LOT 6)

Name	Value	Unit	Formula symbol
Nominal air flow rate, nominal point m ³ /s	0.16	m ³ /s	q _{v,nom}
Actual electrical input power, nominal point	0.14	kW	P _{e,nom}
Face velocity, nominal point	3.2	m/s	v _{nom}
Nominal external pressure, static	382.6	Pa	p _{s,nom}
supply air fan static efficiency, nominal point	58.9	%	η _{es,SUP}
Highest external air leakage rate	1.8	%	
Enclosure sound level, nominal point	73	dB(A)	L _{WA2}
Rating	Product is compliant 2018		

