

Domekt CF 400 V C6M

Maximal air flow, m ³ /h	421
Maximal air flow, l/s	117
Reference flow rate, m ³ /s	0,082
Reference pressure difference, Pa	50
SPI, W/(m ³ /h)	0,27
Thermal efficiency of heat recovery, %	88
Electric air heater capacity, kW / Δt, °C	0,5/5,0
Electric preheater capacity, kW / Δt, °C	1/9,9
Supply voltage, V	1~230
Maximal operating current HE, A	8,2
Electric power input of the fan drive at maximum flow rate, W	114
Electric power input of the fan drive at reference flow rate, W	43
Filters dimensions BxHxL, mm	350x220x46
Unit dimensions BxHxL, mm	585x750x598
Maintenance space, mm	750
Unit weight, kg	55

Acoustic data

A-weighted sound power level L_{WA} , dB(A) at reference flow rate

Supply inlet	51
Supply outlet	66
Exhaust inlet	61
Exhaust outlet	56
Casing	45

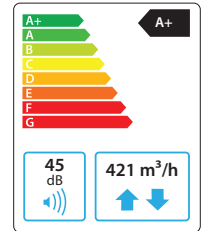
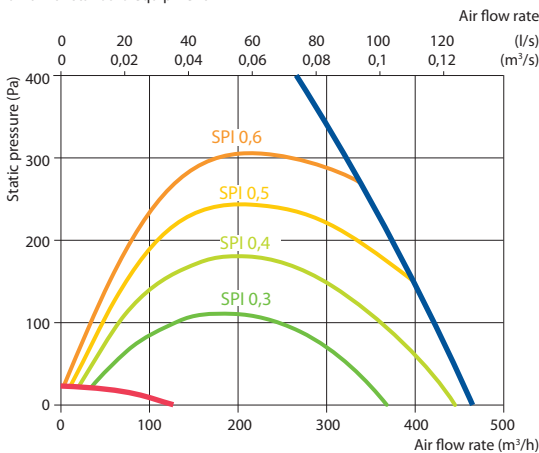
A-weighted sound pressure level L_{PA} , dB(A)

10 m² normally isolated room, distance from casing – 3 m.

Surroundings	34
--------------	----

Performance

Unit with standard equipment



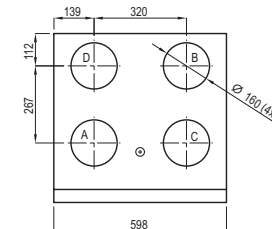
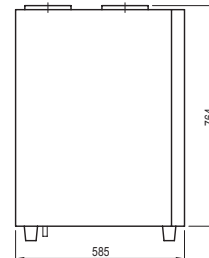
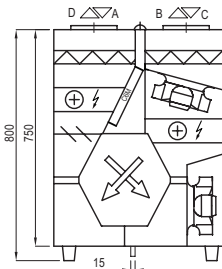
Temperature efficiency

	Winter					Summer		
Outdoor temperature, °C	-23	-15	-10	-5	0	25	30	35
After heat exchanger*, °C	18,2*	18,8*	19,4*	19,4	19,4	22,4	22,9	23,5

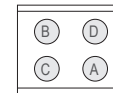
indoor +22°C, 20 % RH.

* calculations made after evaluation of the preheater.

Shown as right (R1)



Shown as left (L1)



- A outdoor intake
- B supply air
- C extract indoor
- D exhaust air

Accessories

Closing damper	AGUJ-M-160+LF230/CM230
Silencer	A/D AGS-160-50-600-M
	B/C AGS-160-50-900-M
Water heater	DH-160
PPU	PPU-HW-3R-15-0,4-W2
2-way valve (heater)	VVP47.10-0,4

Water cooler	DCW-0,4-3
2-way valve (cooler)	VVP47.10-1,6
Outdoor grill	LD-160
Water heater-cooler	DHCW-160
DX heater-cooler	DCF-0,4-3
Heat pump unit	MOU-12HFN8+KA8140

C6.1



C6.2

