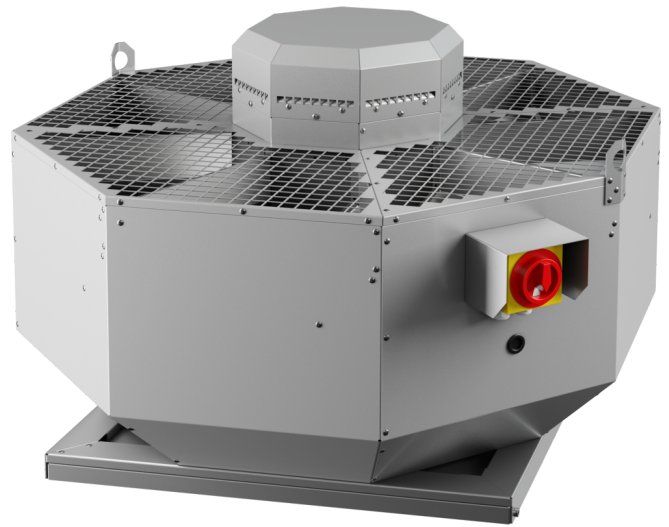


DVL 500 D4 RK 01

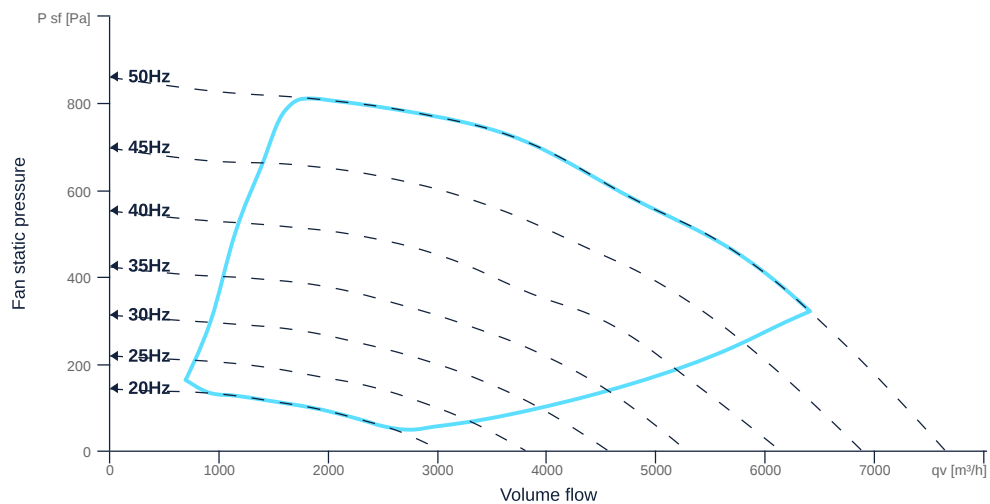
163330

- Backward curved radial impeller
- Vertical discharge
- Housing made of AlMg3, hinged
- Efficient IE3 motor, frequency controllable
- Conveyor temperature up to 60 °C in continuous operation
- Integrated main switch



MAP

Name	Value	Unit
Volume flow	0	m³/h
Pressure	0	Pa



zur Produktseite

DVL 500 D4 RK 01

163330

ruck

GENERAL DATA

Name	Value	Unit	Formula symbol
ERP conformity	Yes		
Duct size	-		WxH _{duct}
Pipe connection size (DN)	-		DN
Rated voltage (entire device)	400	V	U _{rated}
Phases (entire device)	3~		phase
Electrical protection (entire device)	6 A		fuse
Housing material	Aluminium		mat _{casing}
Impeller material	Steel		mat _{impeller}
Weight	54	kg	m
Nominal air flow rate, nominal point m ³ /h	4305.6	m ³ /h	q _{v,nom}
Nominal external pressure, static	649.1	Pa	p _{s,nom}
Fan type	Radial		Fa _{type}
Category / Installation situation	A		cat

ERP DATA (LOT 6)

Name	Value	Unit	Formula symbol
Nominal air flow rate, nominal point m ³ /s	1.2	m ³ /s	q _{v,nom}
Actual electrical input power, nominal point	1.3	kW	P _{e,nom}
Face velocity, nominal point	2.7	m/s	v _{nom}
Nominal external pressure, static	649.1	Pa	p _{s,nom}
supply air fan static efficiency, nominal point	63.8	%	η _{es,SUP}
Enclosure sound level, nominal point	90	dB(A)	L _{WA2}
Rating	Product is compliant 2018		



zur Produktseite