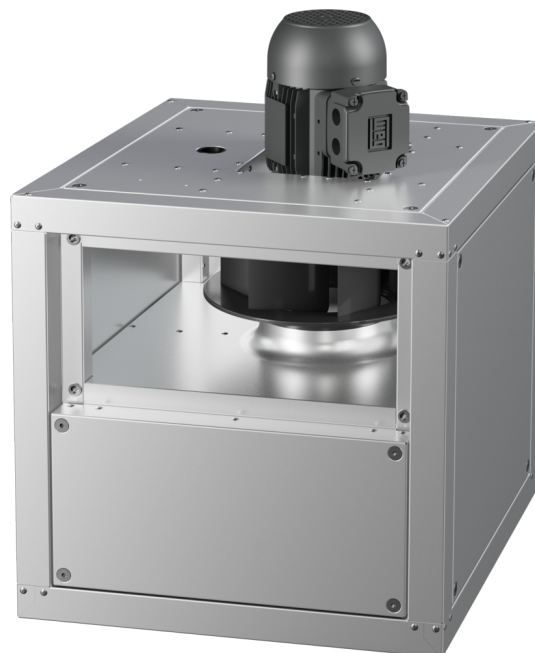


MPC 250 D2 TI 40

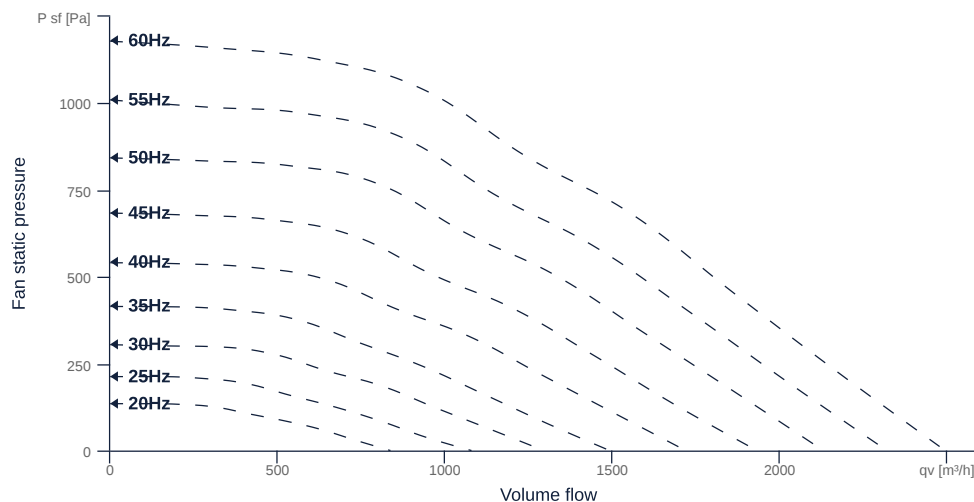
158235

- Backward curved radial impeller
- Removable side walls, variable discharge direction
- Sheet steel housing double-walled, 30 mm mineral wool
- AC motor outside the airflow, controllable
- Conveyed medium temperature up to 120 °C in continuous operation
- Housing bottom designed with integrated drain



MAP

Name	Value	Unit
Volume flow	0	m³/h
Pressure	0	Pa



zur Produktseite

MPC 250 D2 TI 40

158235

ruck

GENERAL DATA

Name	Value	Unit	Formula symbol
ERP conformity	Yes		
Duct size	-		WxHduct
Pipe connection size (DN)	-		DN
Rated voltage (entire device)	400	V	U _{rated}
Phases (entire device)	3~		phase
Electrical protection (entire device)	6 A		fuse
Housing material	Steel		mat _{casing}
Impeller material	Steel		mat _{impeller}
Weight	41	kg	m
Nominal air flow rate, nominal point m ³ /h	993.6	m ³ /h	q _{v,nom}
Nominal external pressure, static	851	Pa	p _{s,nom}
Fan type	Radial		F _{antype}
Category / Installation situation	A		cat

ERP DATA (LOT 6)

Name	Value	Unit	Formula symbol
Nominal air flow rate, nominal point m ³ /s	0.28	m ³ /s	q _{v,nom}
Actual electrical input power, nominal point	0.49	kW	P _{e,nom}
Face velocity, nominal point	4.7	m/s	v _{nom}
Nominal external pressure, static	851	Pa	p _{s,nom}
supply air fan static efficiency, nominal point	58.1	%	η _{es,SUP}
Highest external air leakage rate	0.22	%	
Enclosure sound level, nominal point	77	dB(A)	L _{WA2}
Rating	Product is compliant 2018		



zur Produktseite